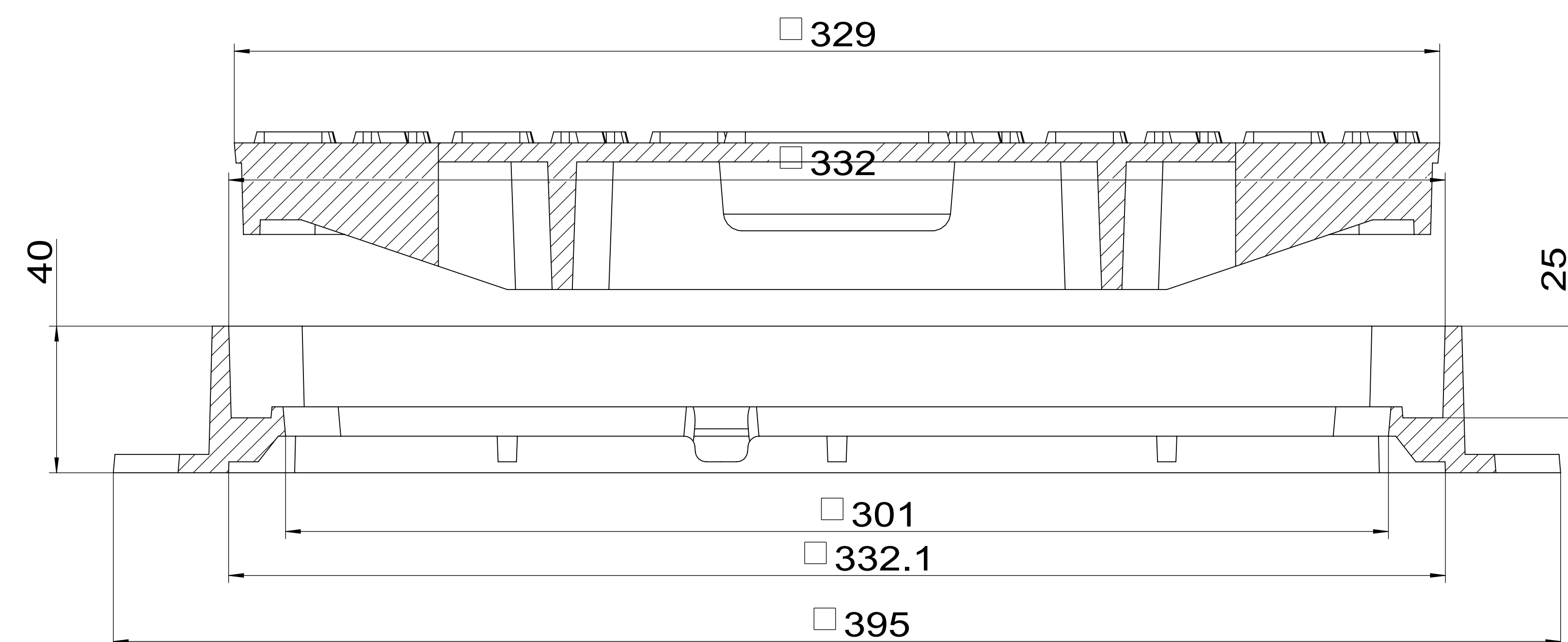


B
1 : 1

A
1 : 1

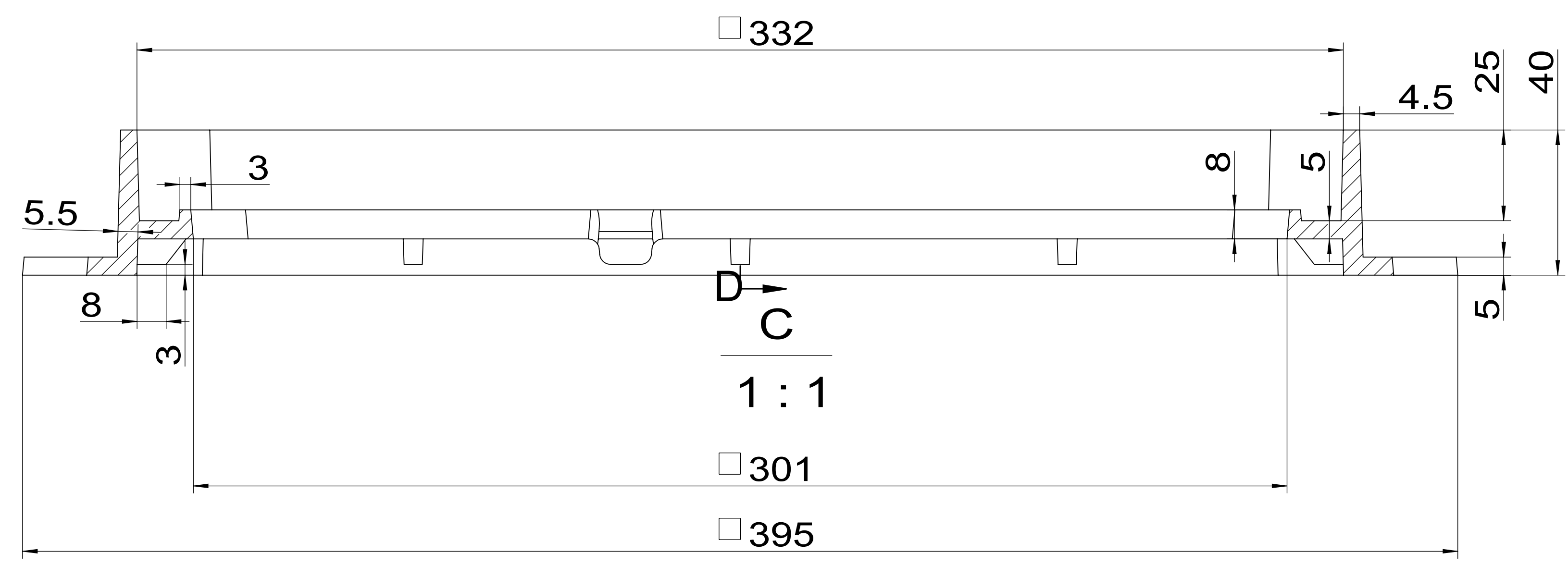
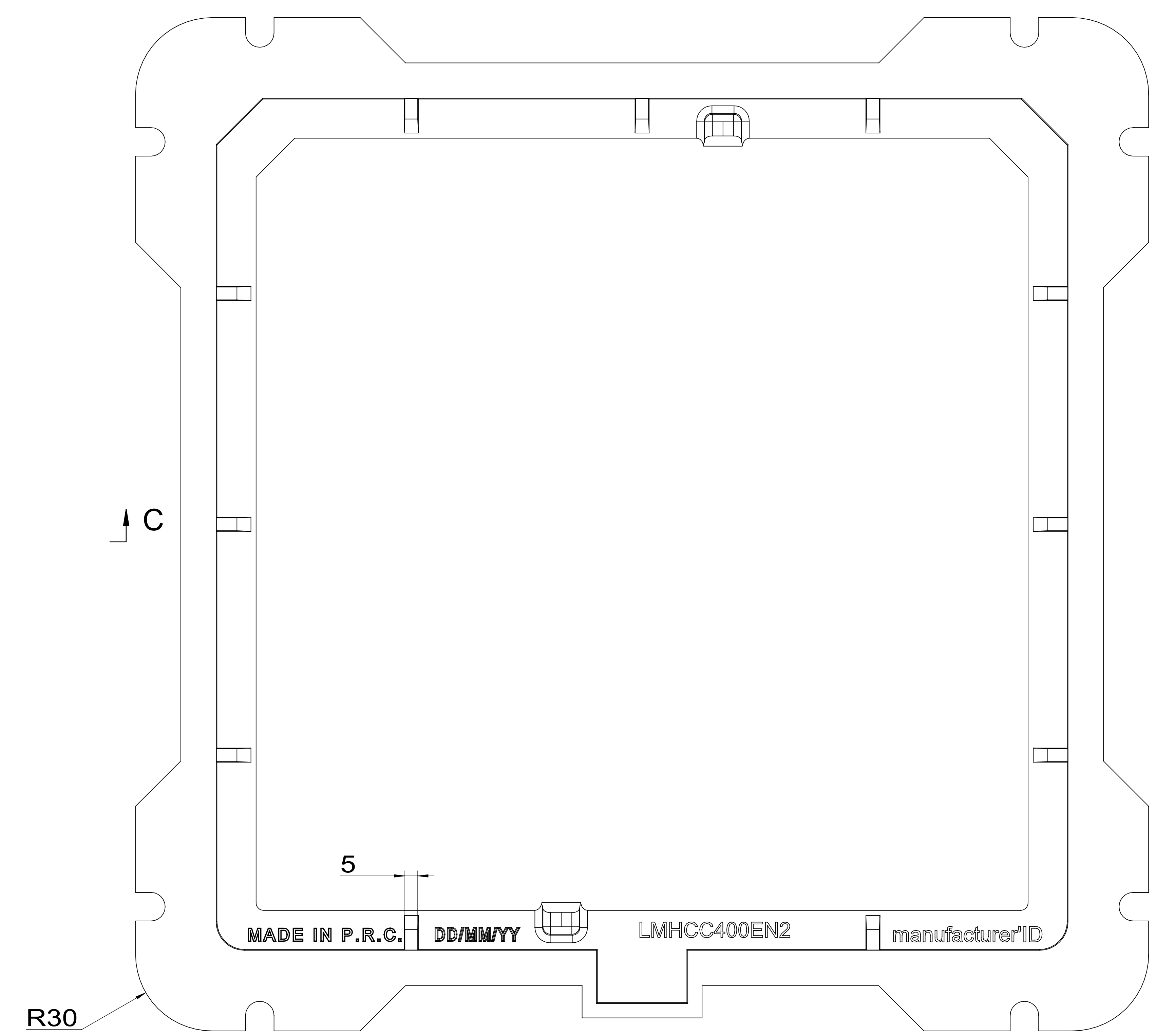
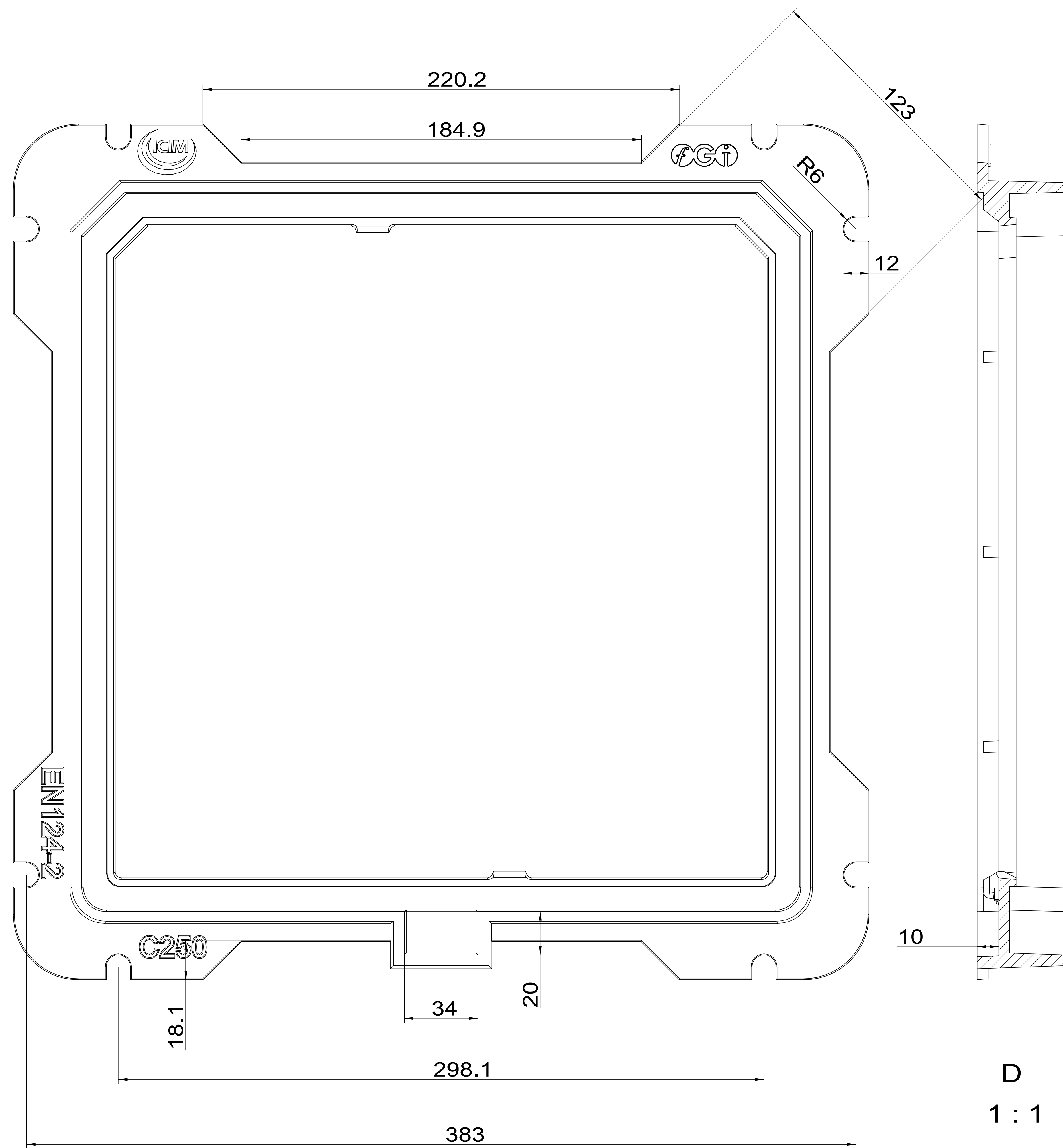



Technical requirement

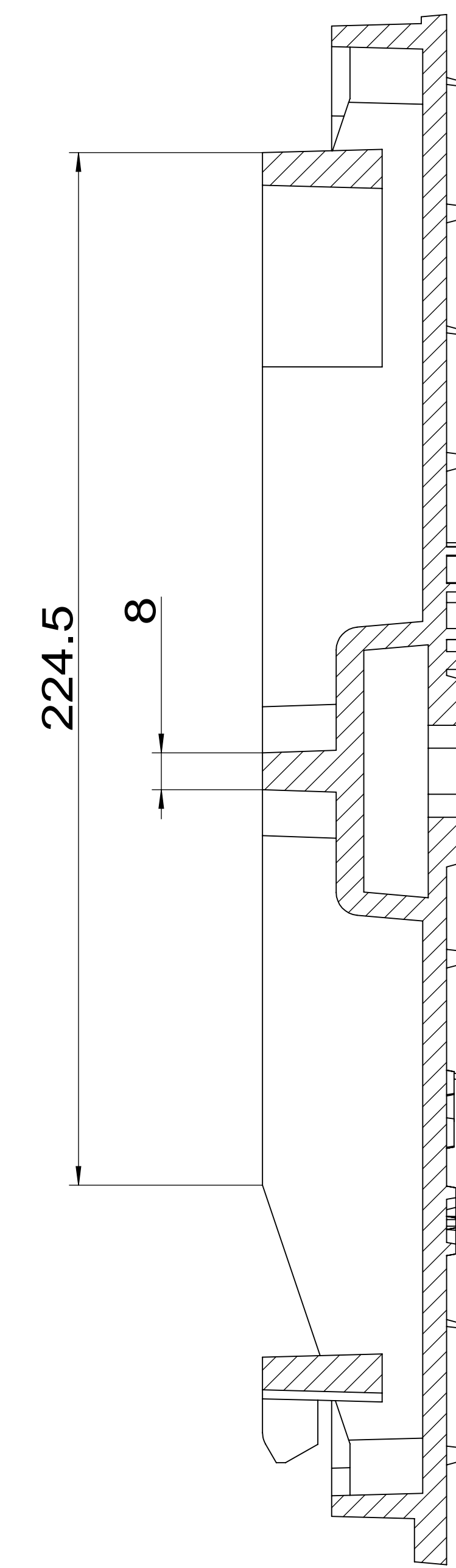
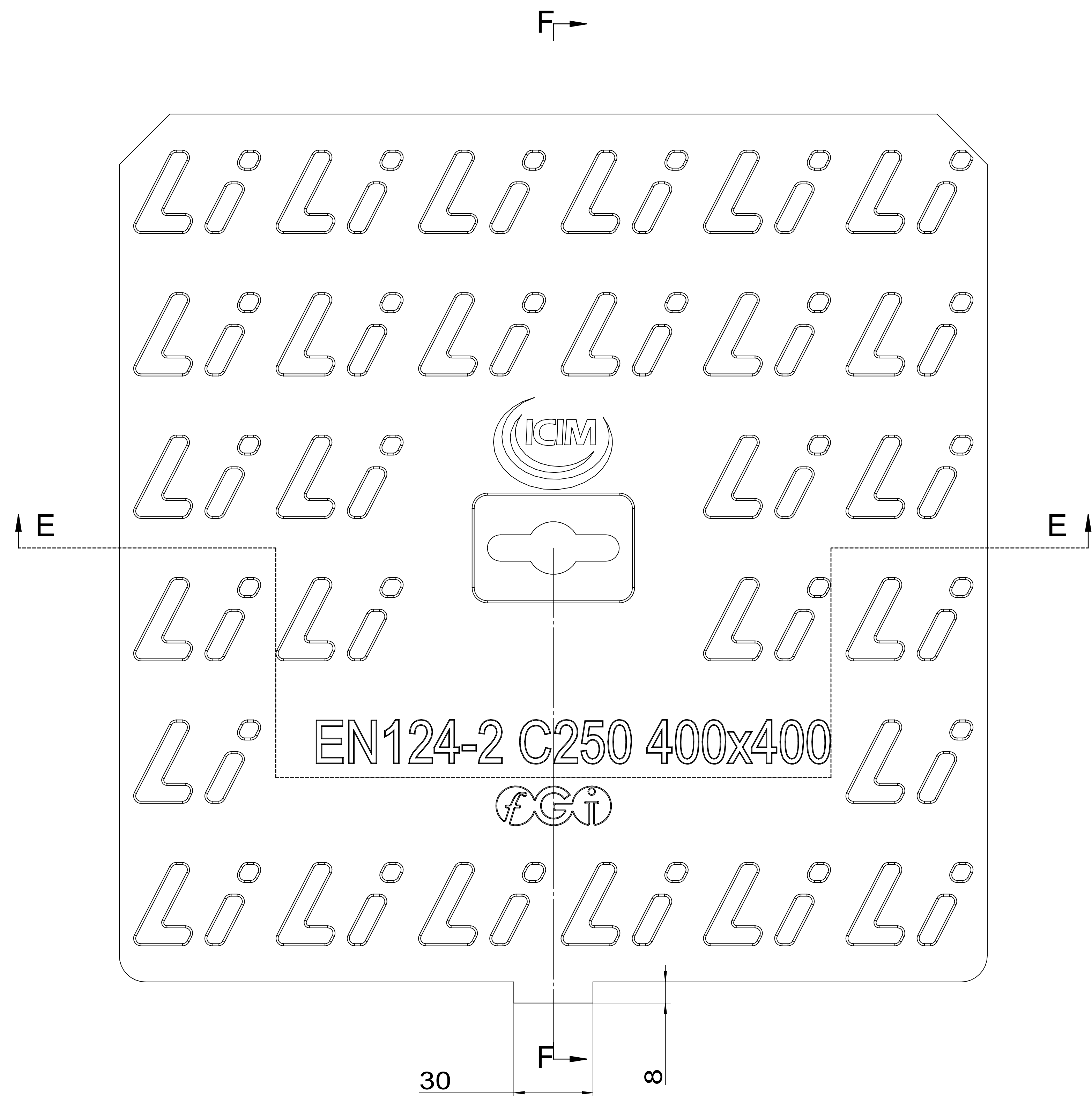
- 1、 pattern draft is 1-2° of main beams ,cover ,grids, frame side.
- 2、 pattern draft is 5-10° of assistive beams ,gird holes ,outside.
- 3、 pattern draft is 15° of surface patterns ,mark, logo.
- 4、 casting radius which aren't been marked is R1-R3.

General Dimension Tolerance	General Weight Tolerance
According To ISO 8062-CT10	Tolerance(%)
	±5%

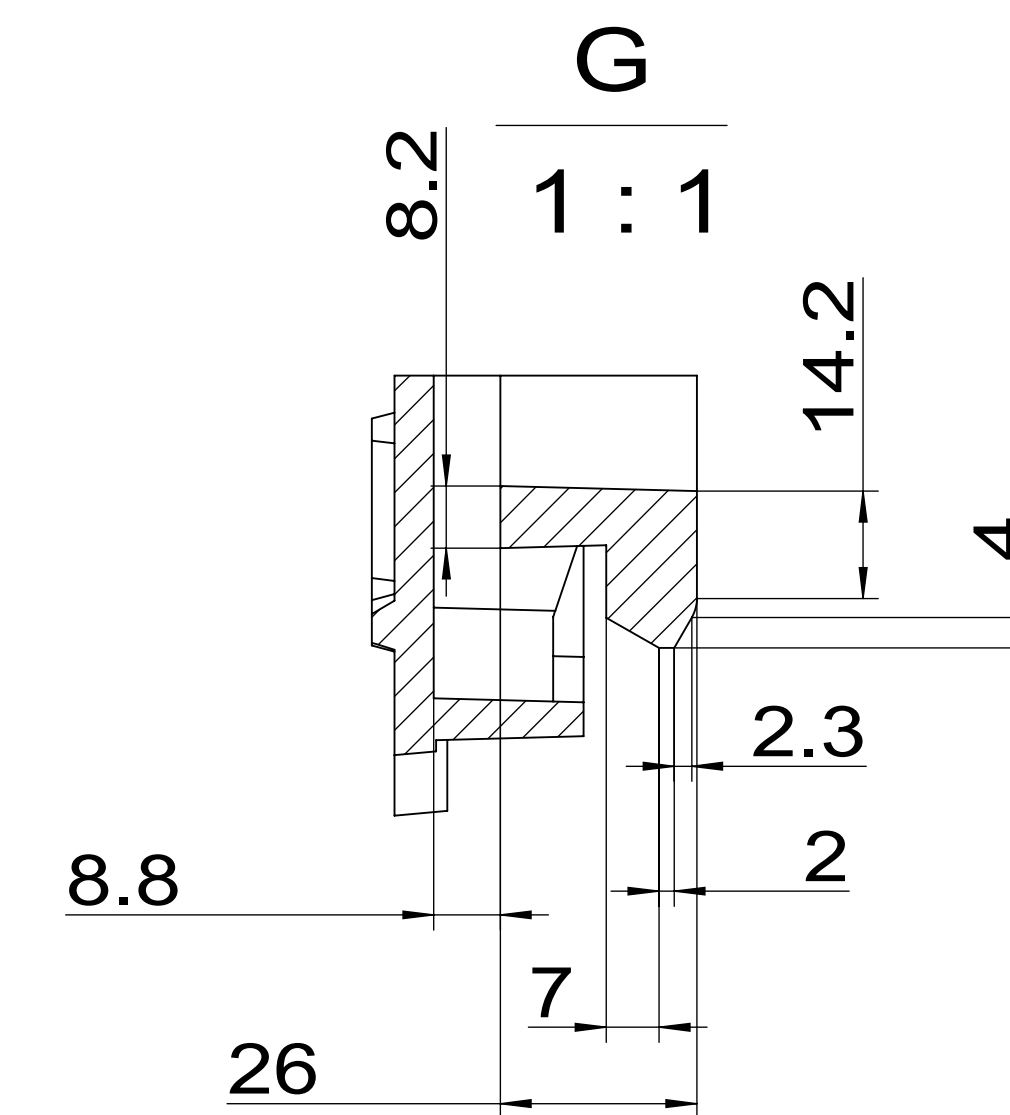
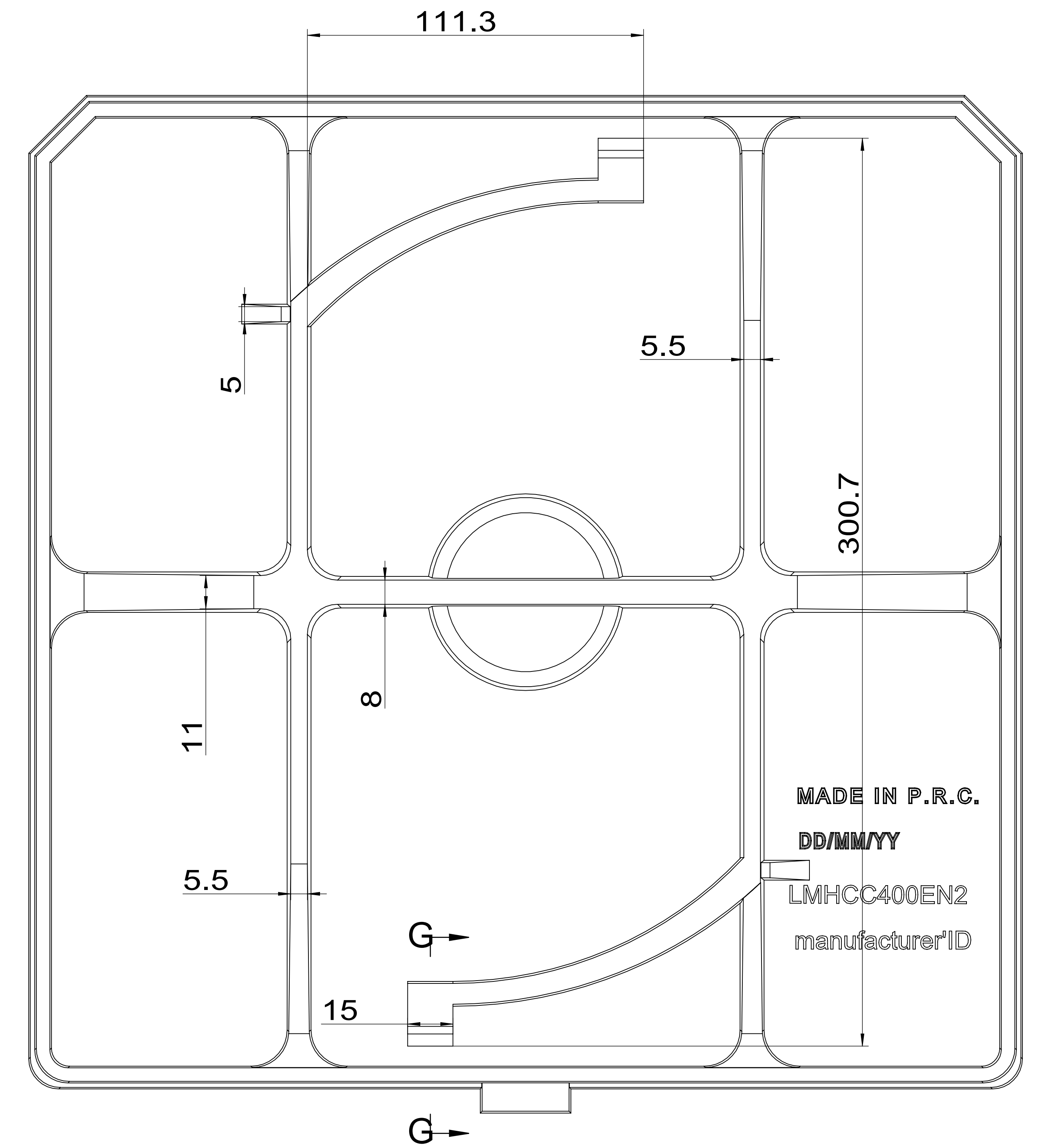
MATERIAL	GJS500-7	WEIGHT/kg	11.3kg	CLASS	EN124-2 C250	SCALE	MARK:
						SIZE	CERTIFICATE NO. /
						395x395x40	PRODUCT CODE
						NAME	L-LGSMEN-240L
						ITEM CODE	
				DESIGN DATE	2017/6/28		



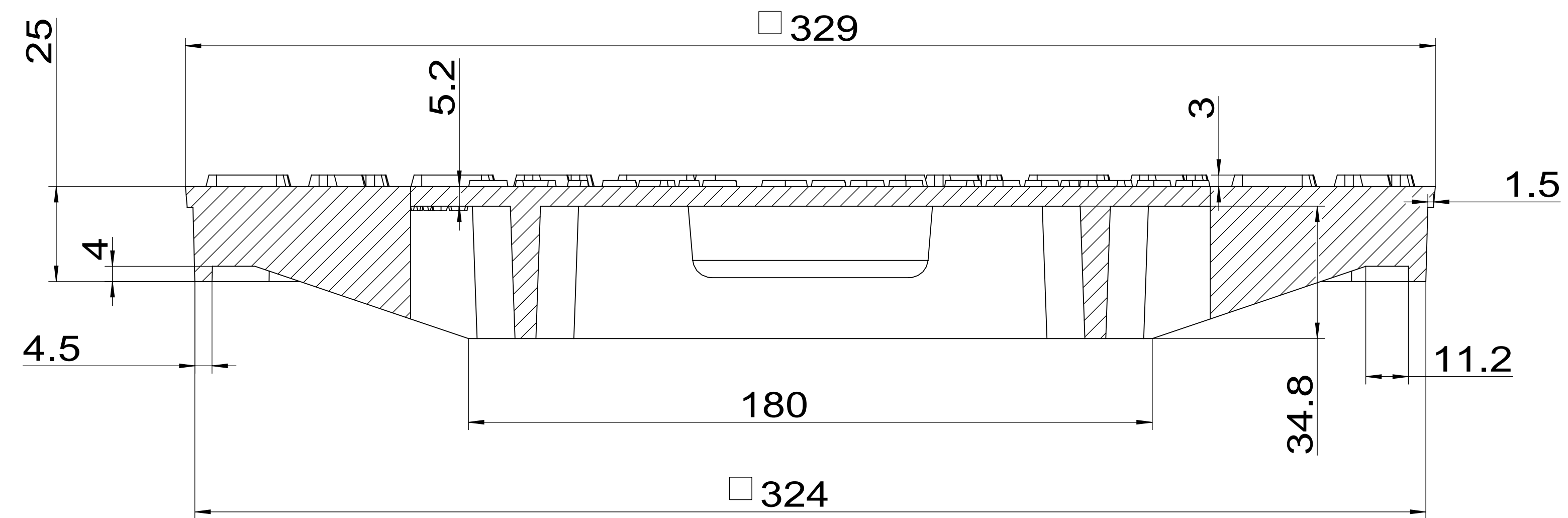
MATERIAL	GJS500-7	WEIGHT/kg	3.5kg	CLASS	EN124-2 C250	SCALE	MARK:
						SIZE	CERTIFICATE NO. /
						395x395x40	PRODUCT CODE
						NAME	
		ITEM CODE	L-LGSMEN-240L				
		DESIGN DATE	2017/6/28	EDITION	0	SHEET	2/3



F
1:1



G
1:1



E
1:1

MATERIAL	GJS500-7	WEIGHT/kg	7.8kg	CLASS	EN124-2 C250	SCALE	MARK:
						SIZE	CERTIFICATE NO. /
						395x395x40	PRODUCT CODE
						NAME	L-LGSMEN-240L
						ITEM CODE	
						DESIGN DATE	2017/6/28