

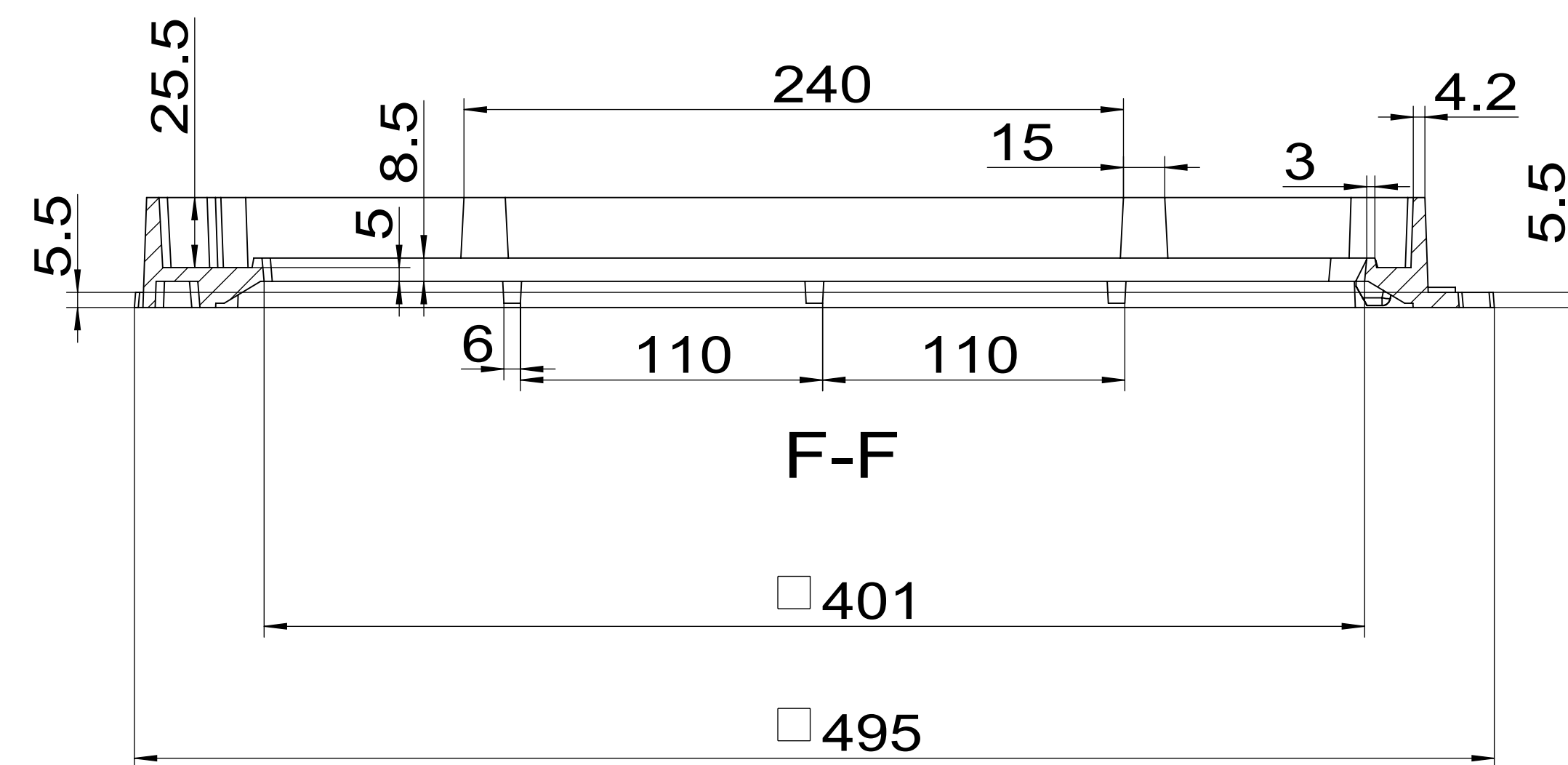
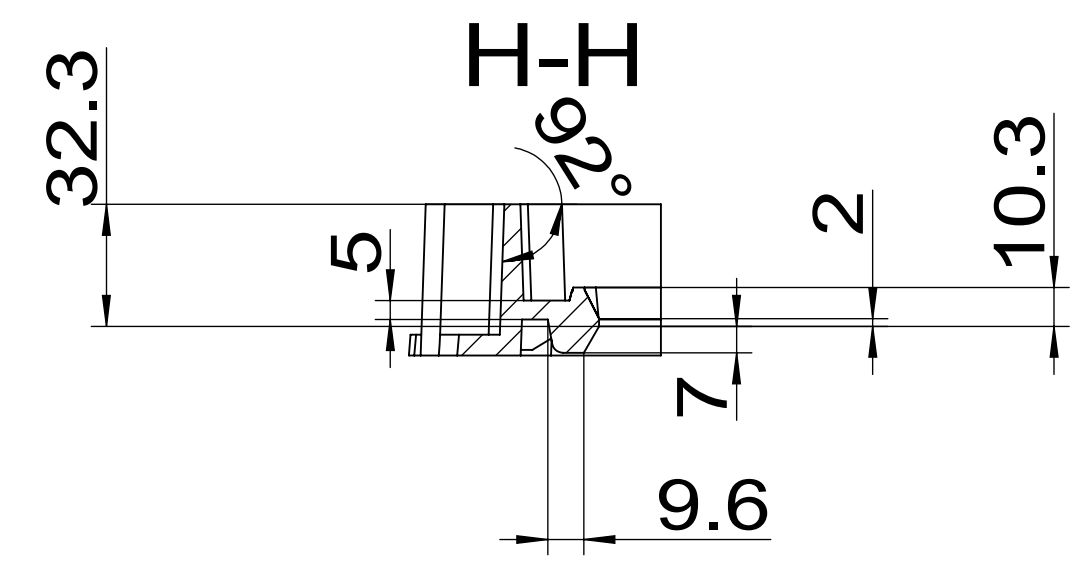
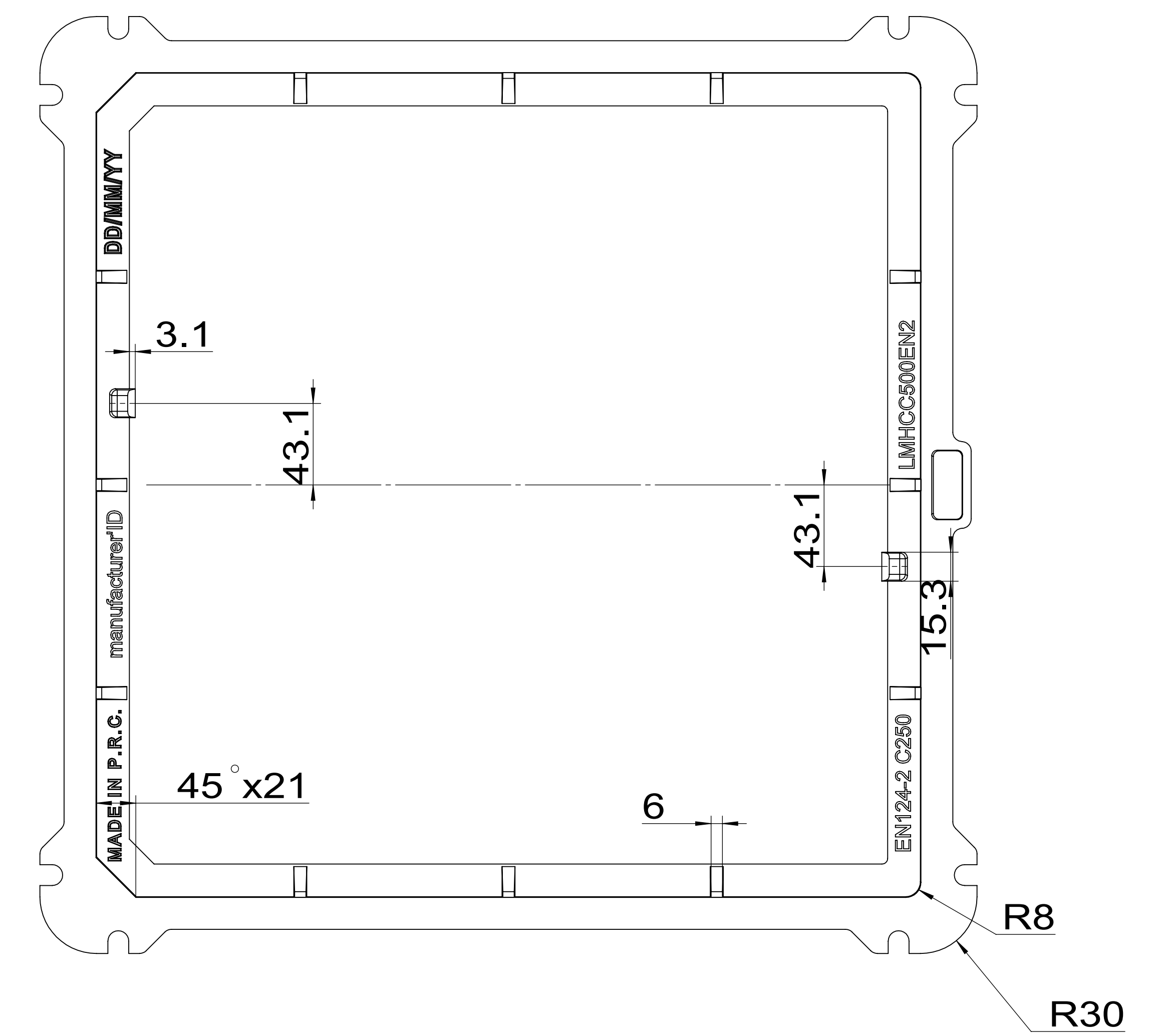
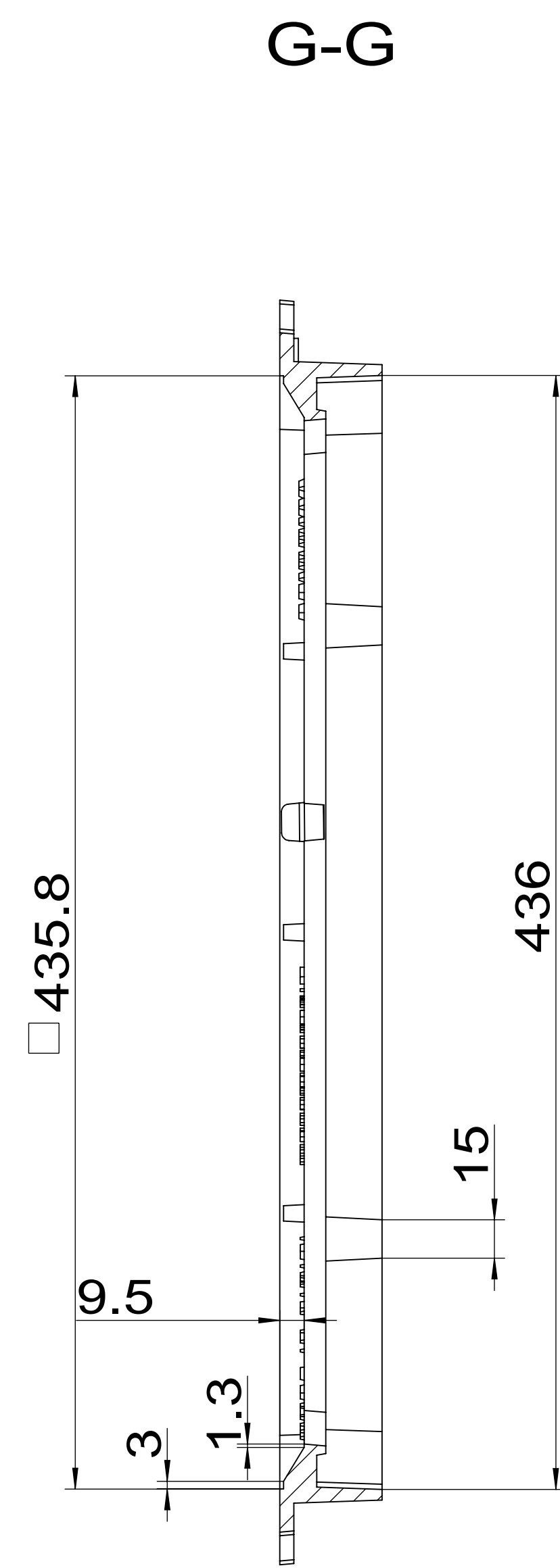
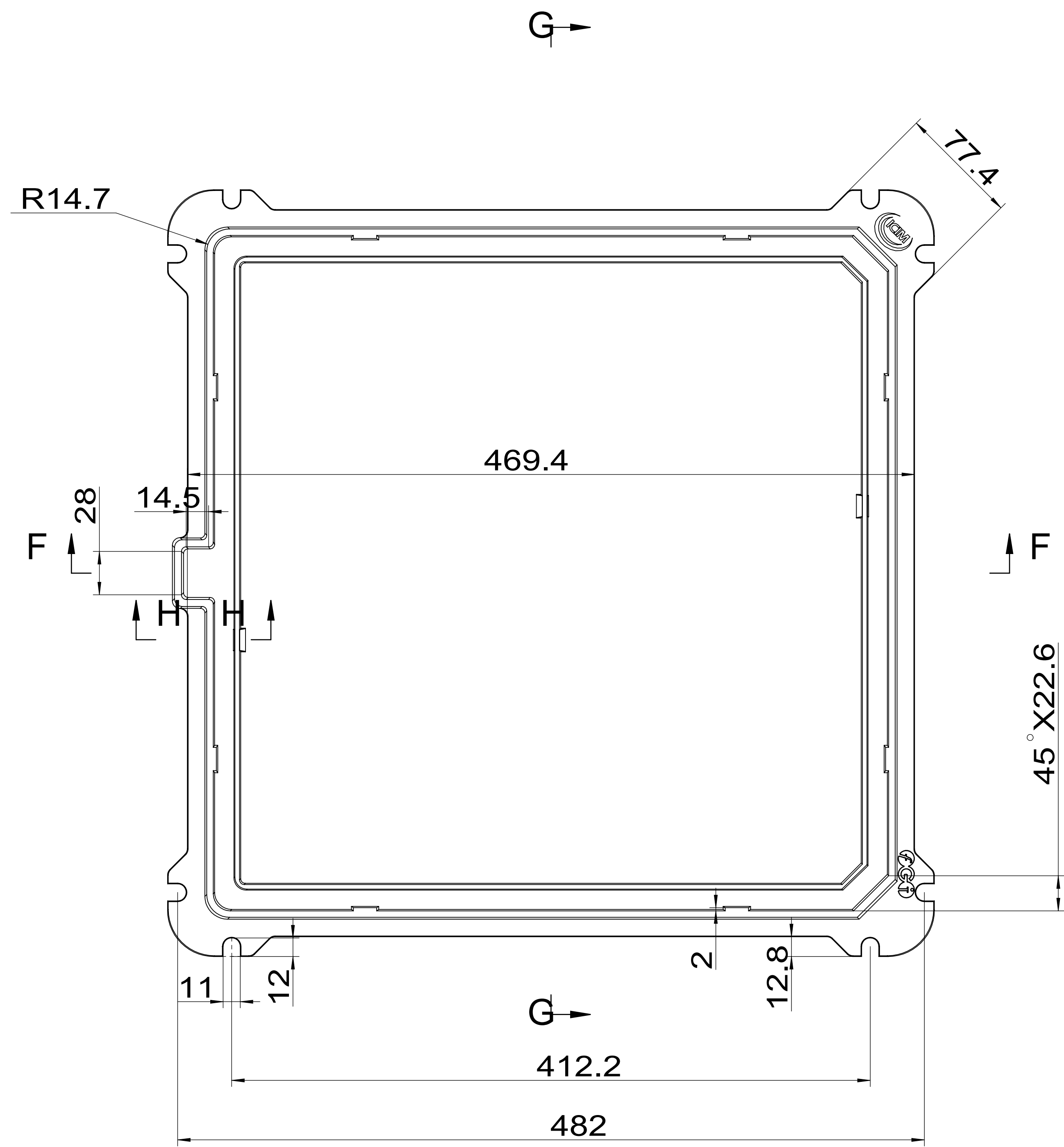
Technical requirement

- 1、 pattern draft is 1-2° of main beams ,cover ,grids, frame side.
- 2、 pattern draft is 5-10° of assistive beams ,gird holes ,outside.
- 3、 pattern draft is 15° of surface patterns ,mark, logo.
- 4、 casting radius which aren't been marked is R1-R3.

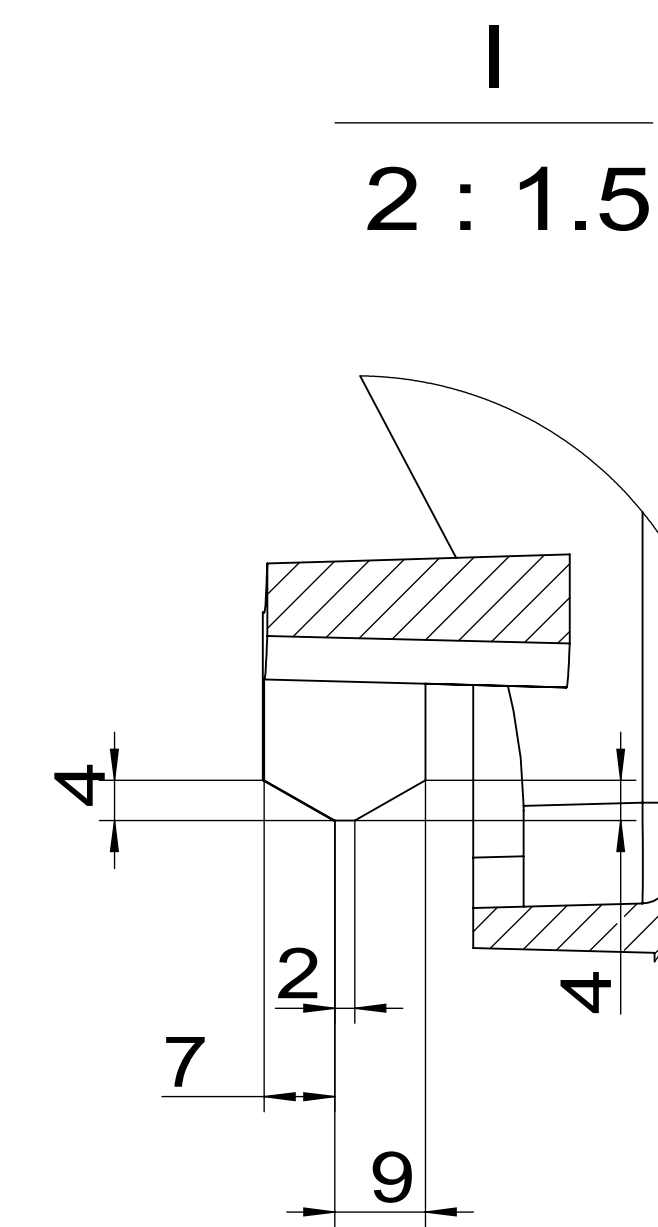
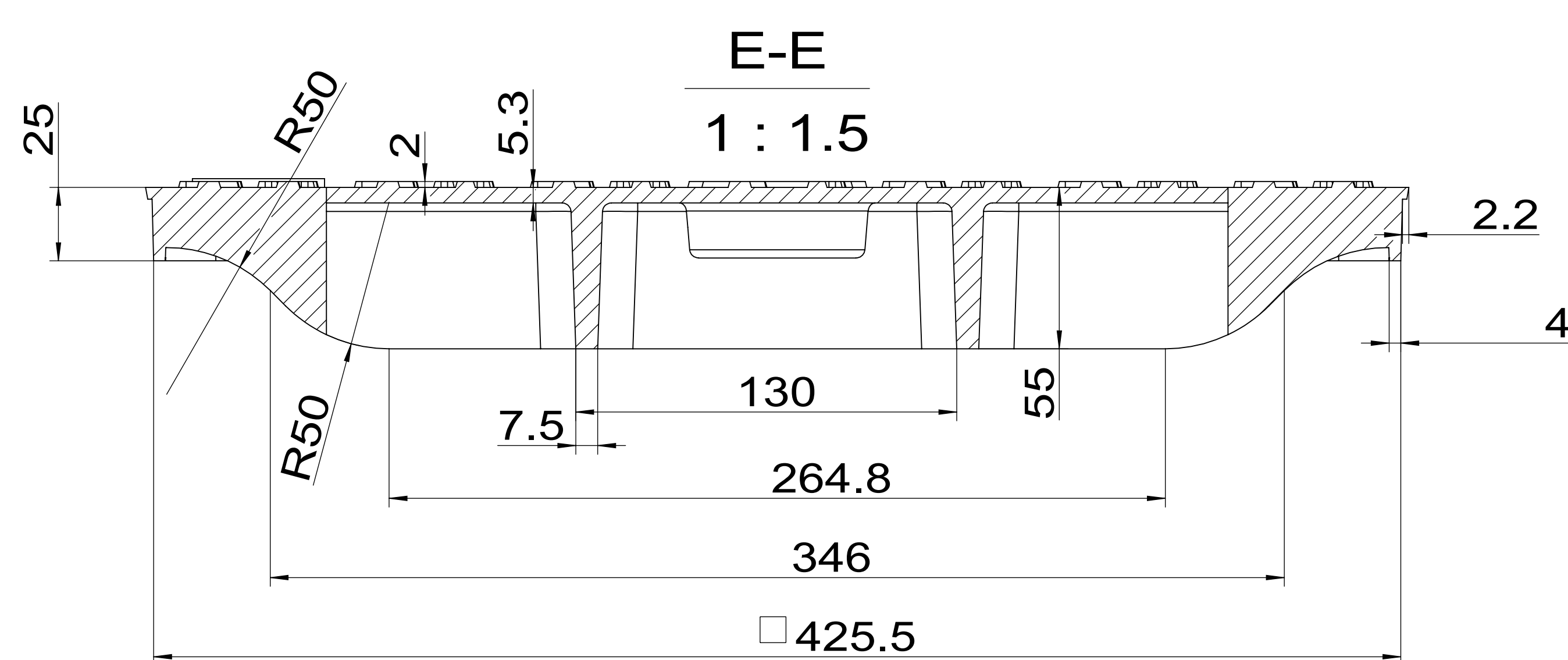
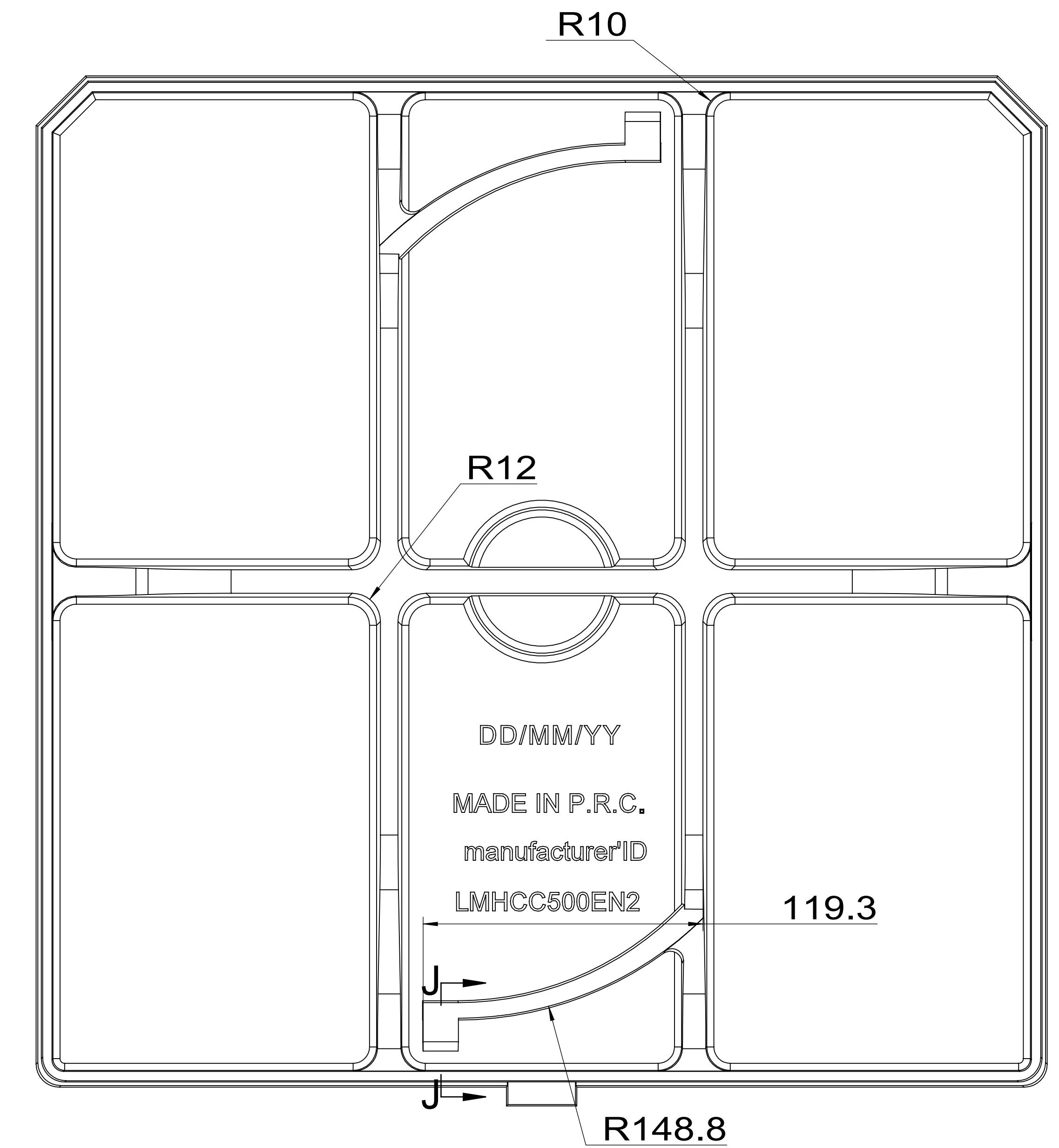
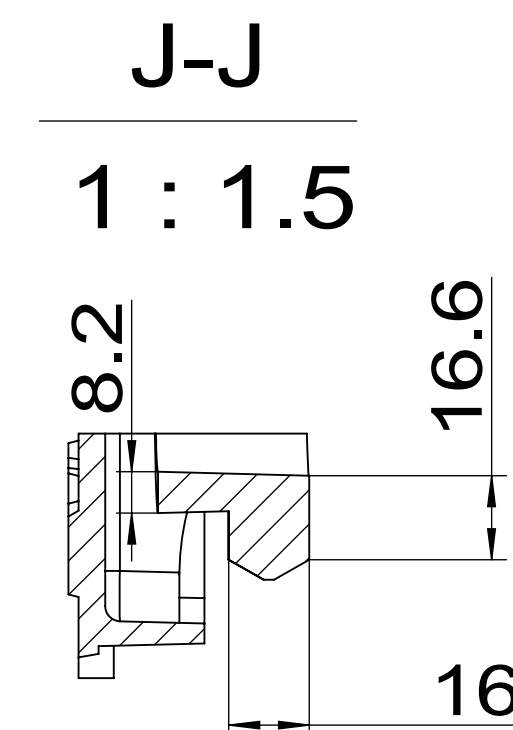
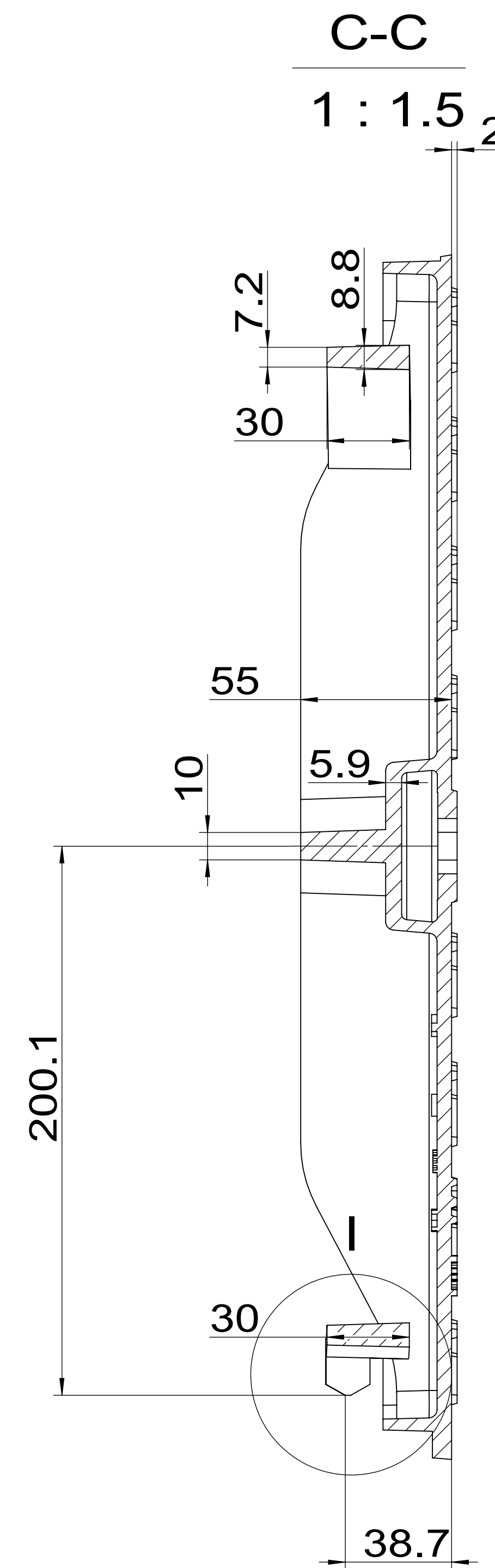
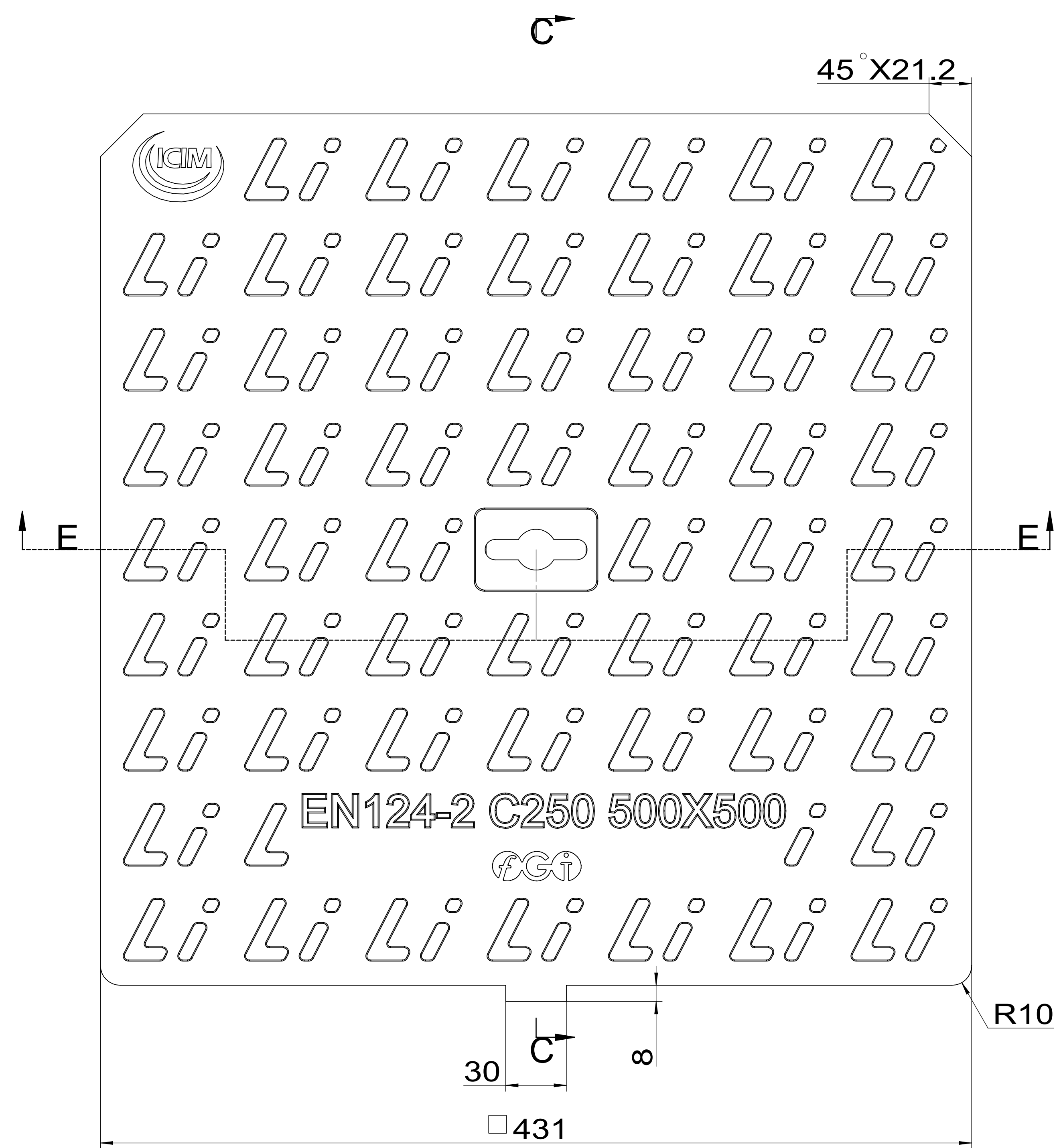
General Dimension Tolerance		General Weight Tolerance	
According To ISO 8062-CT10		Tolerance(%)	
		±5%	

MATERIAL	GJS500-7	WEIGHT/kg	18kg	CLASS	EN124-2 C250	SCALE	MARK:
						SIZE	CERTIFICATE NO. /
						495x495x40	PRODUCT CODE
						NAME	
						L-LGSMEN-250L	
				ITEM CODE			
				DESIGN DATE			
				2017/6/28			
				EDITION			
				0			
				SHEET			
				1/3			





MATERIAL	GJS500-7	WEIGHT/kg	5.2kg	CLASS	EN124-2 C250	SCALE	MARK:
						SIZE	CERTIFICATE NO. /
						495x495x40	PRODUCT CODE
						NAME	L-LGSMEN-250L
						ITEM CODE	
				DESIGN DATE	2017/6/28	EDITION	SHEET
						0	2/3



MATERIAL	GJS500-7	WEIGHT/kg	12.8	CLASS	EN124-2 C250	SCALE	MARK:
						SIZE	CERTIFICATE NO. /
						495x495x40	PRODUCT CODE
						NAME	
						ITEM CODE	L-LGSMEN-250L
						DESIGN DATE	EDITION
						2017/6/28	0
							SHEET
							3/3

