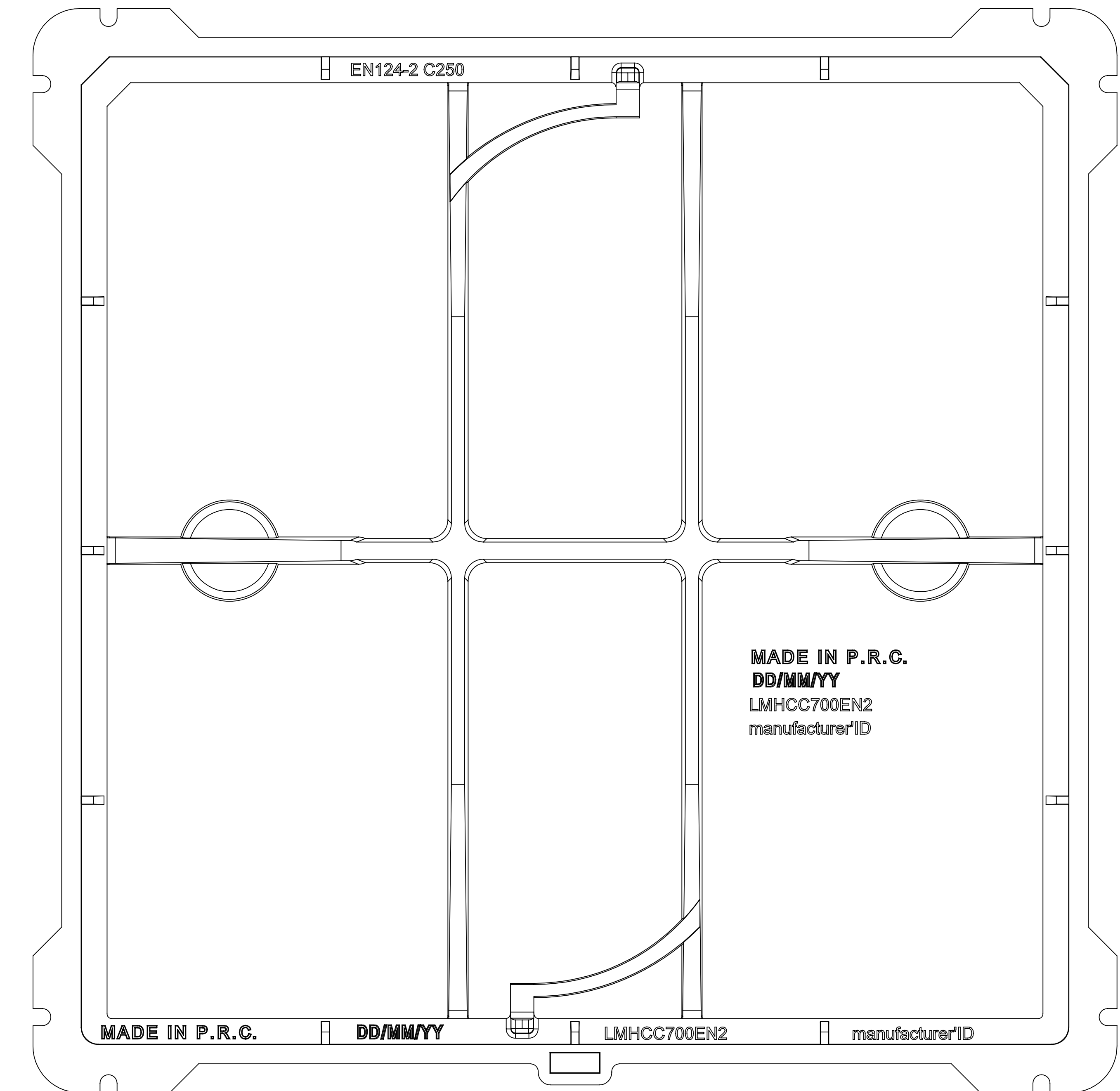
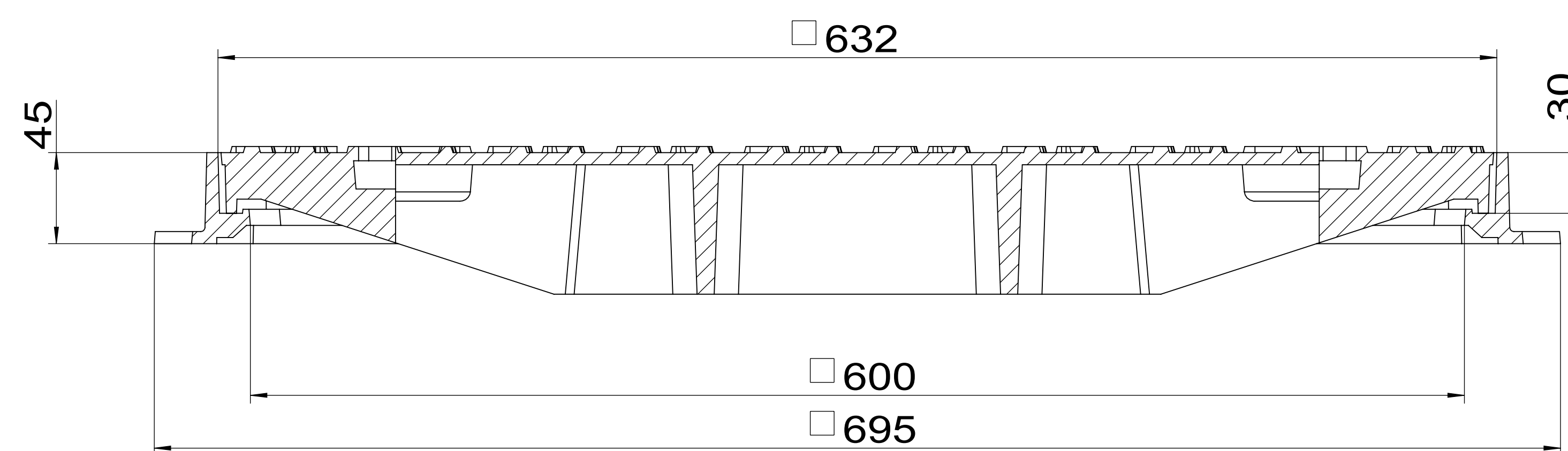


B-B



A-A



Technical requirement

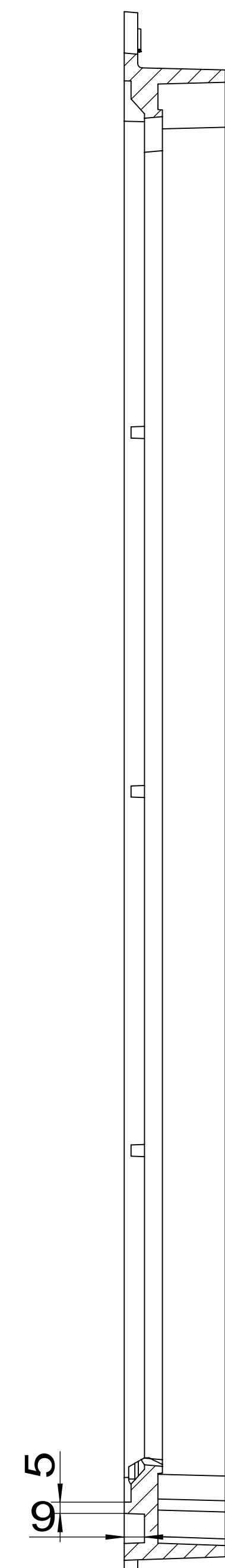
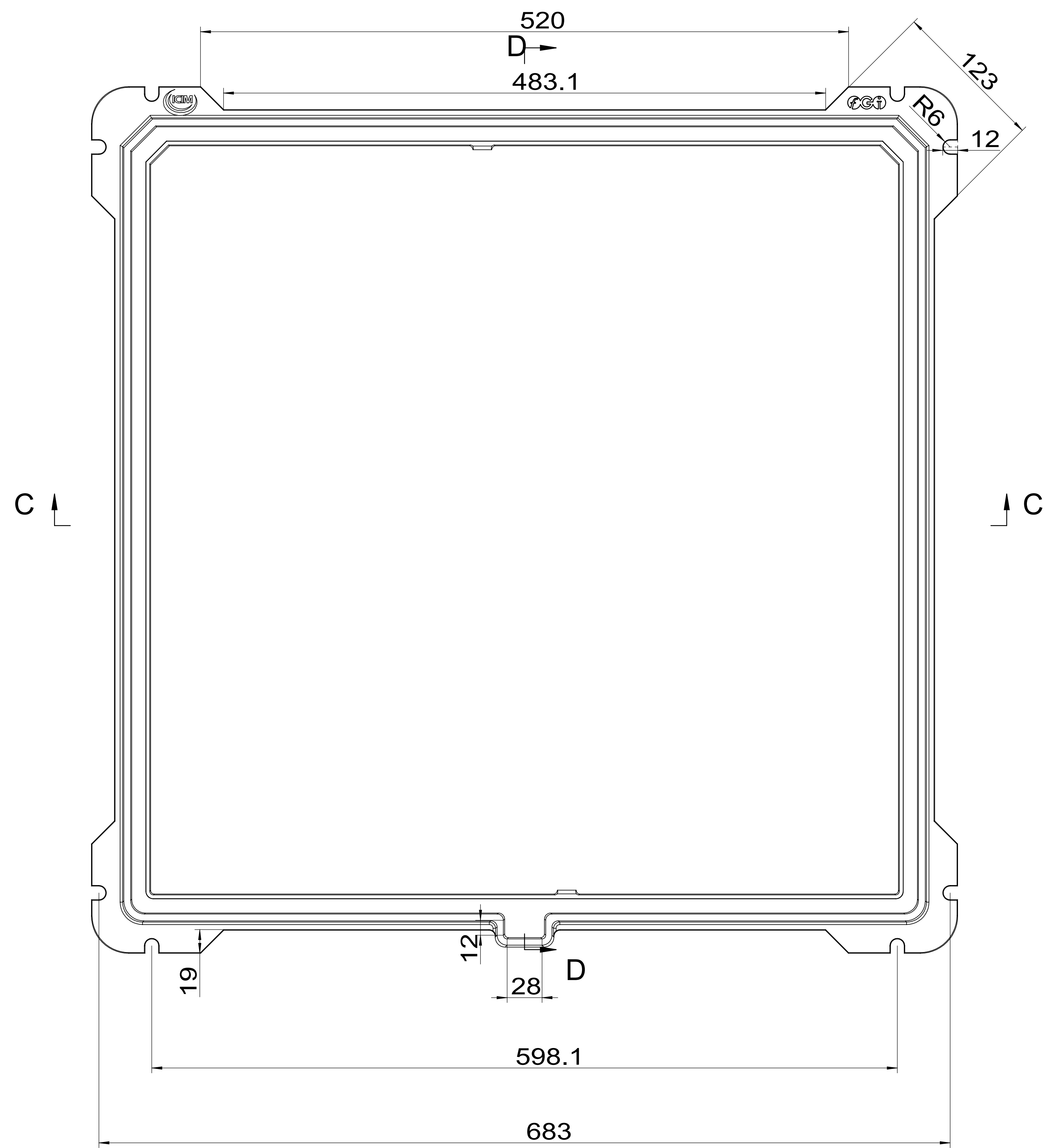
- 1、 pattern draft is 1-2° of main beams ,cover ,grids, frame side.
- 2、 pattern draft is 5-10° of assistive beams ,gird holes ,outside.
- 3、 pattern draft is 15° of surface patterns ,mark, logo.
- 4、 casting radius which aren't been marked is R1-R3.

General Dimension Tolerance
According To ISO 8062-CT10

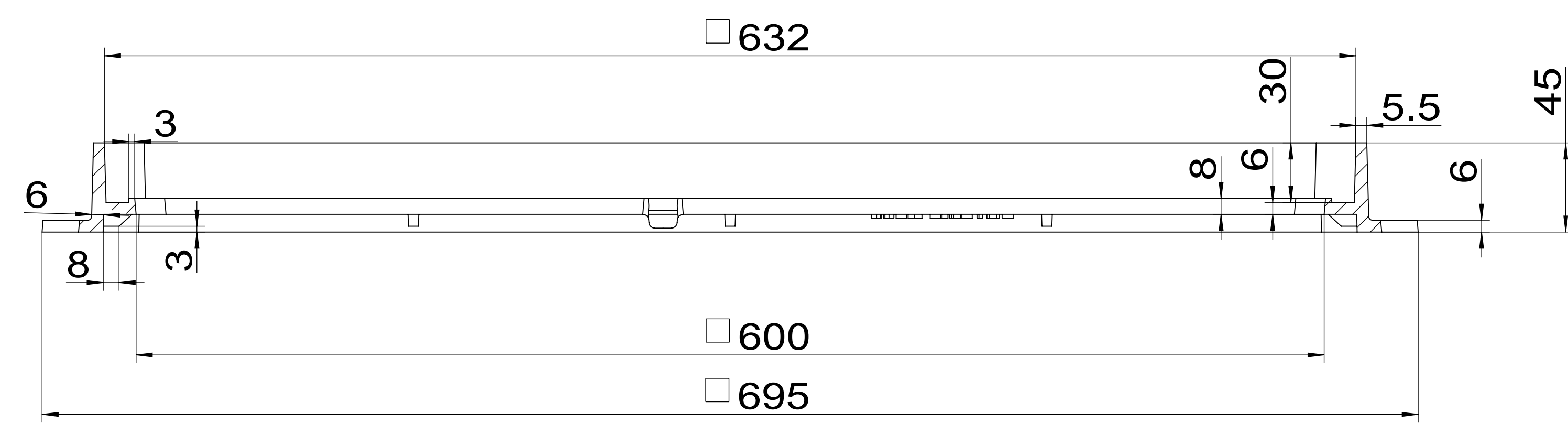
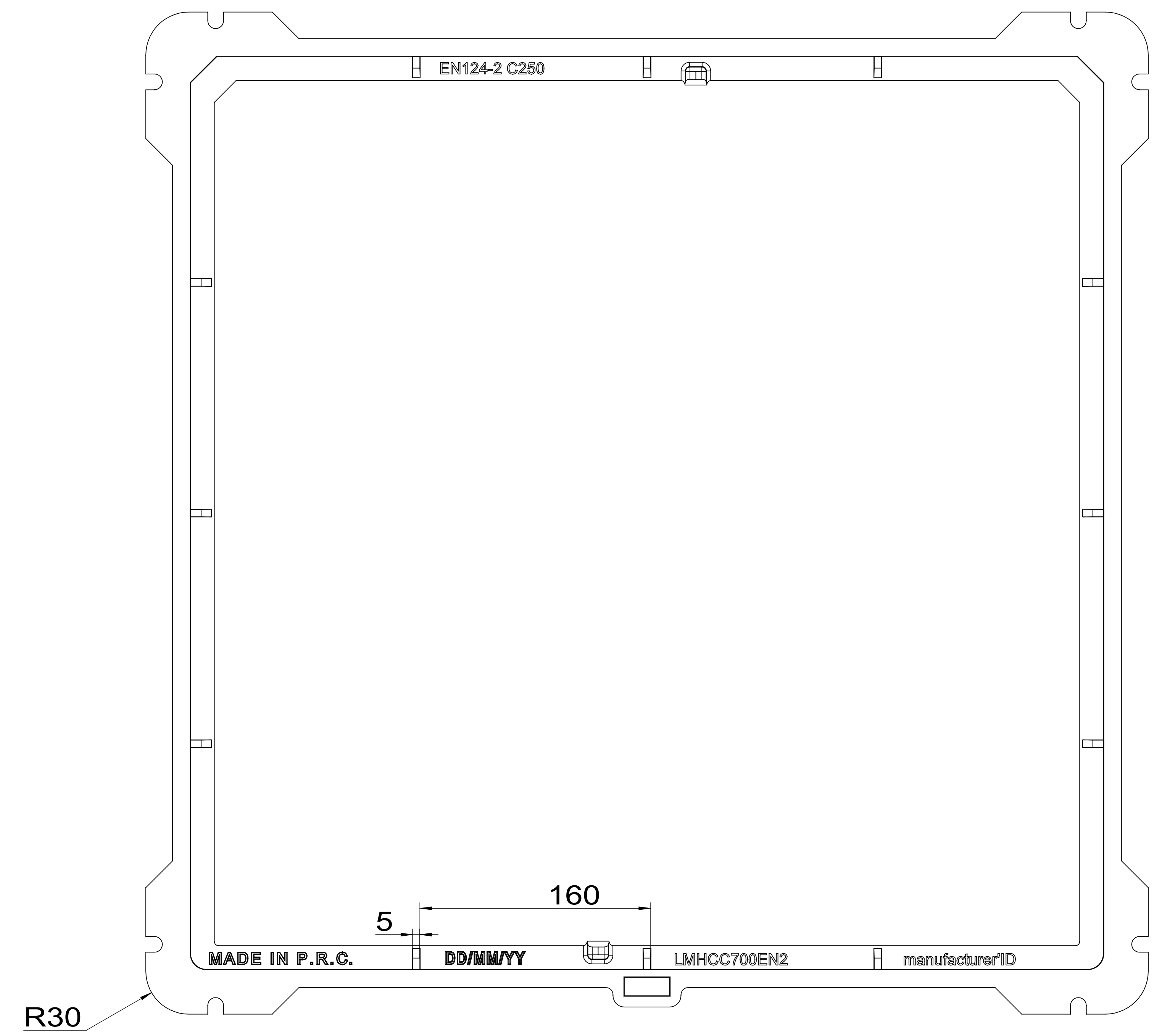
General Weight Tolerance
Tolerance(%)
±5%

MATERIAL	GJS500-7	WEIGHT/kg	38kg	CLASS	EN124-2 C250	SCALE	MARK:
						SIZE	CERTIFICATE NO. /
						695X695X45	PRODUCT CODE
						NAME	L-LGSMEN-270L
						ITEM CODE	
						DESIGN DATE	EDITION
						2017/6/28	0
							SHEET
							1/3





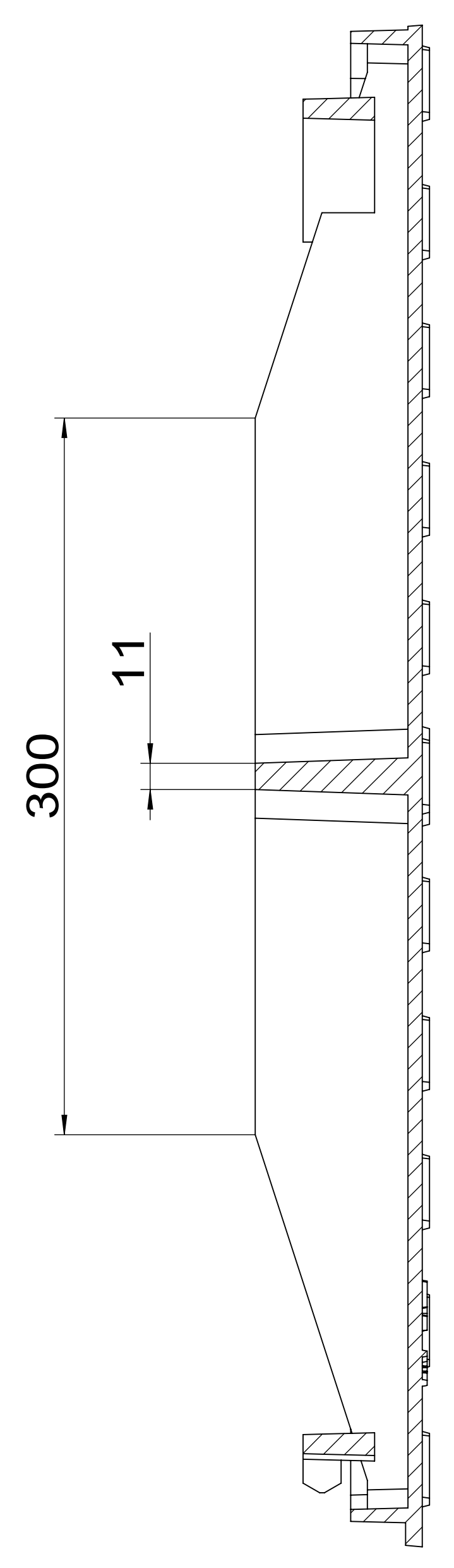
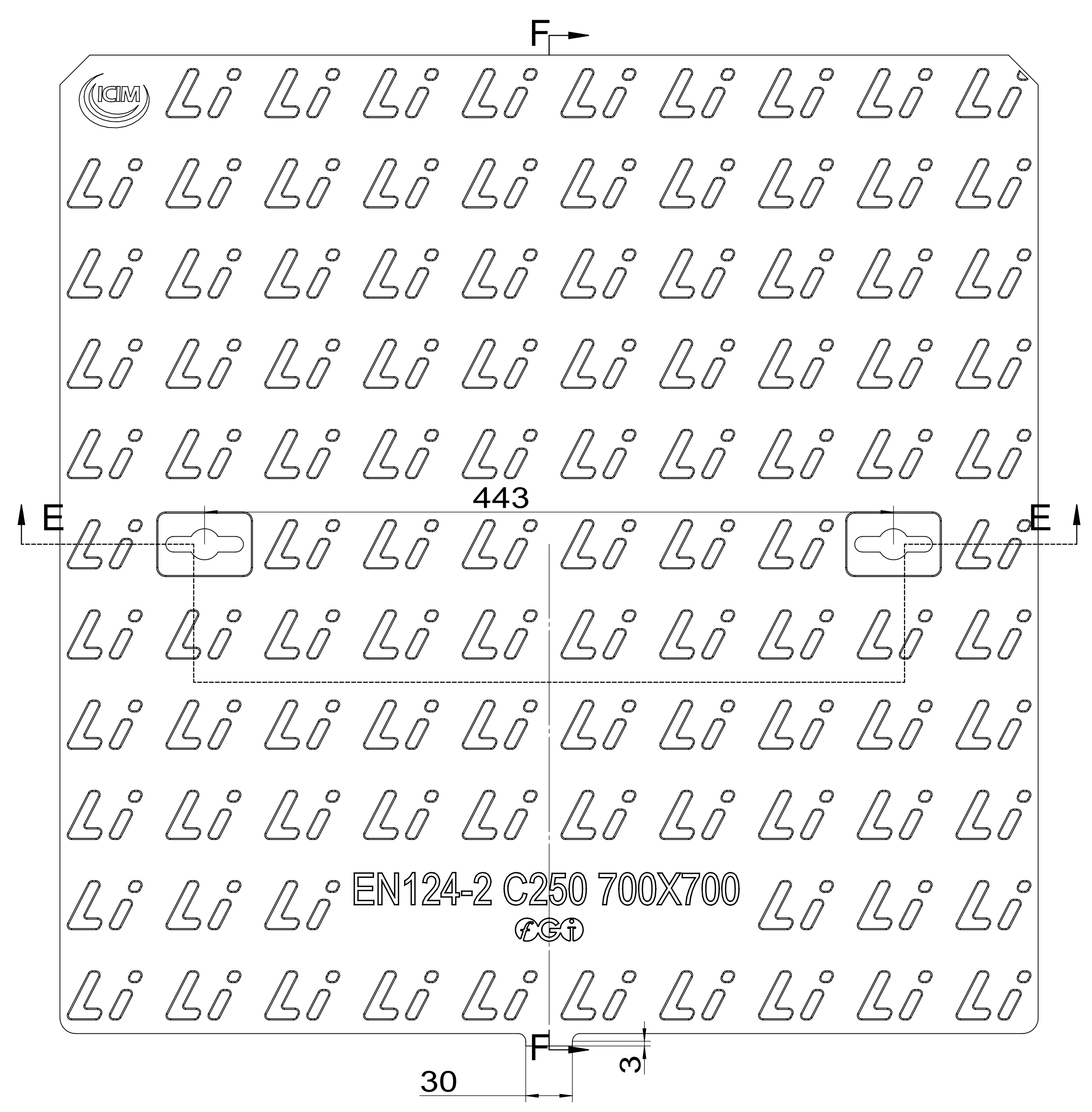
D-D



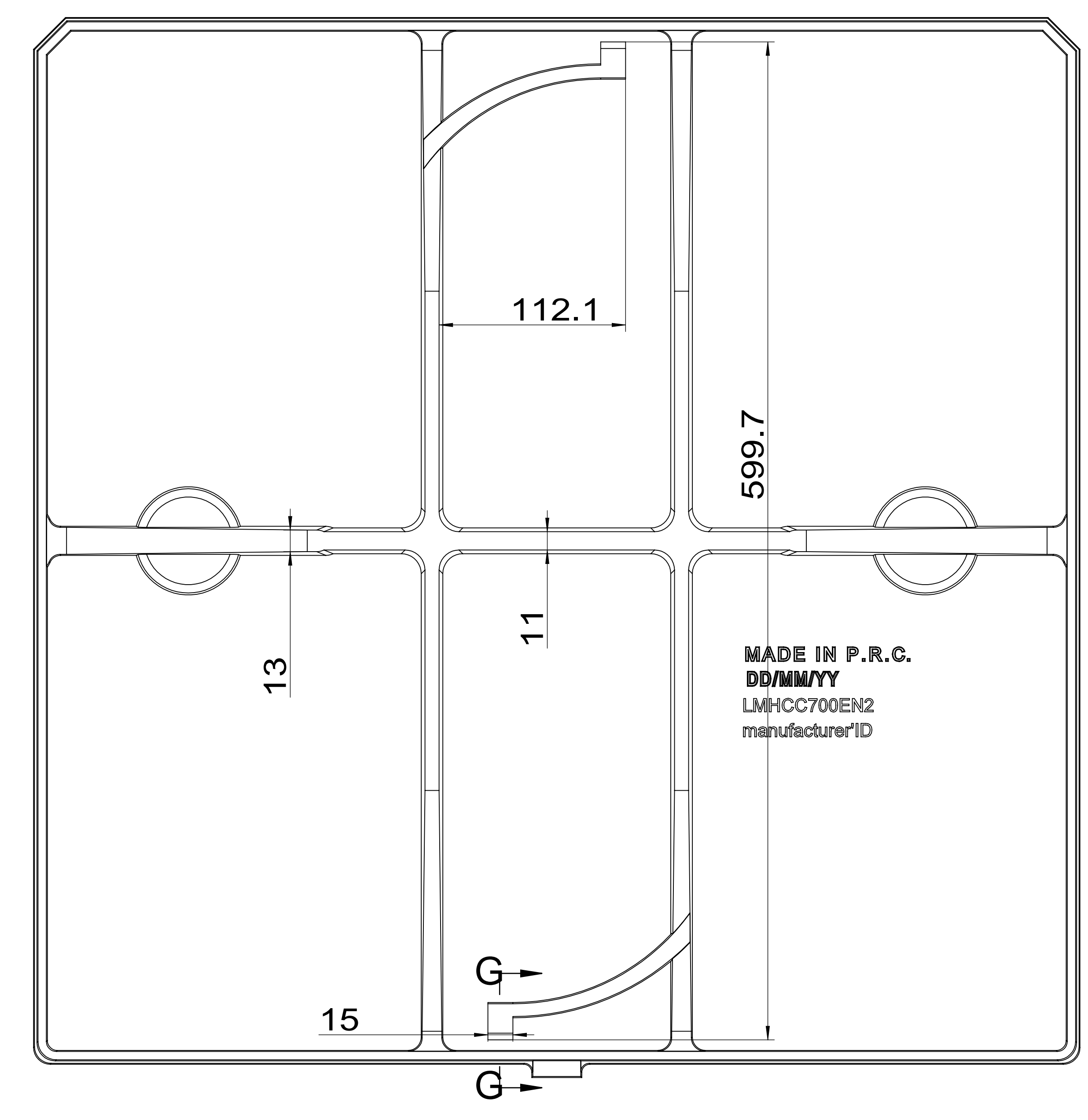
C-C

MATERIAL	GJS500-7	WEIGHT/kg	8.3kg	CLASS	EN124-2 C250	SCALE	MARK:
						SIZE	CERTIFICATE NO. /
						695X695X45	PRODUCT CODE
						NAME	
						L-LGSMEN-270L	
				ITEM CODE			
				DESIGN DATE			
				2017/6/28	EDITION	SHEET	
					0	2/3	

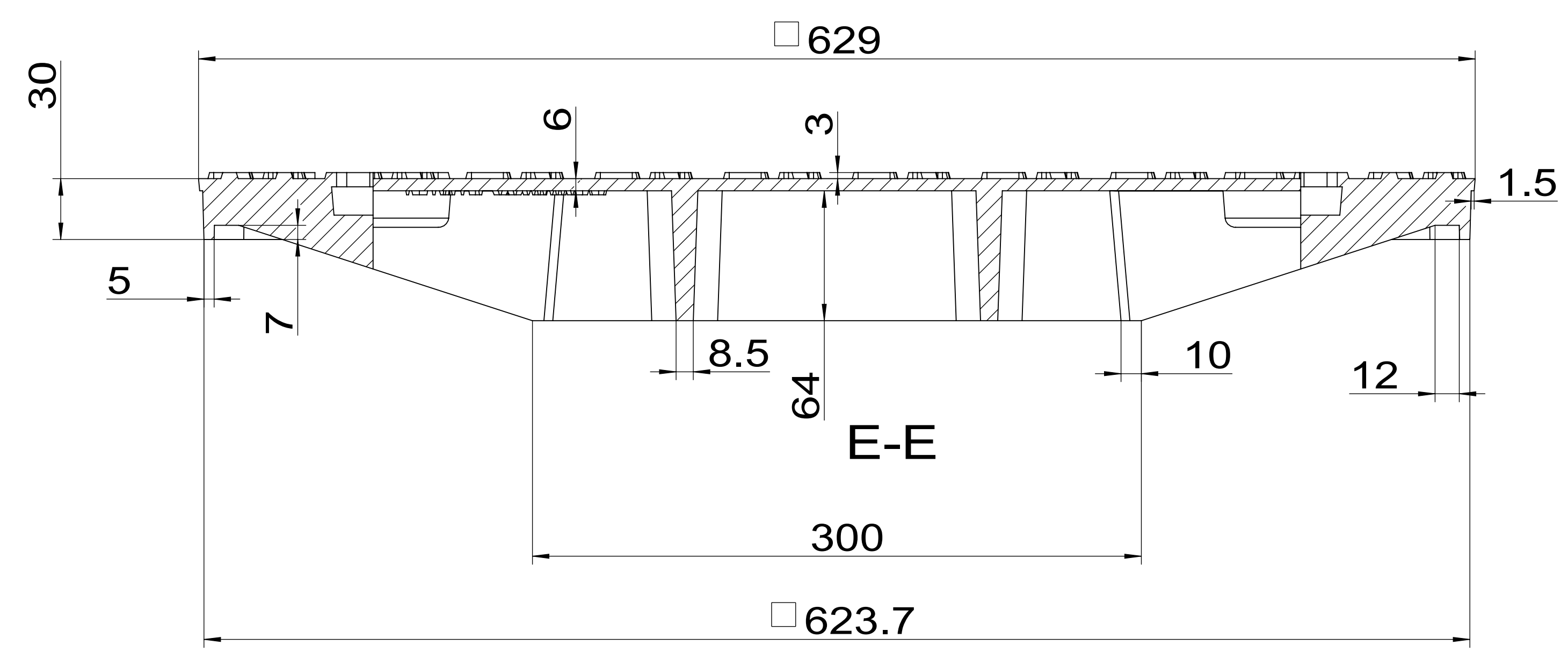
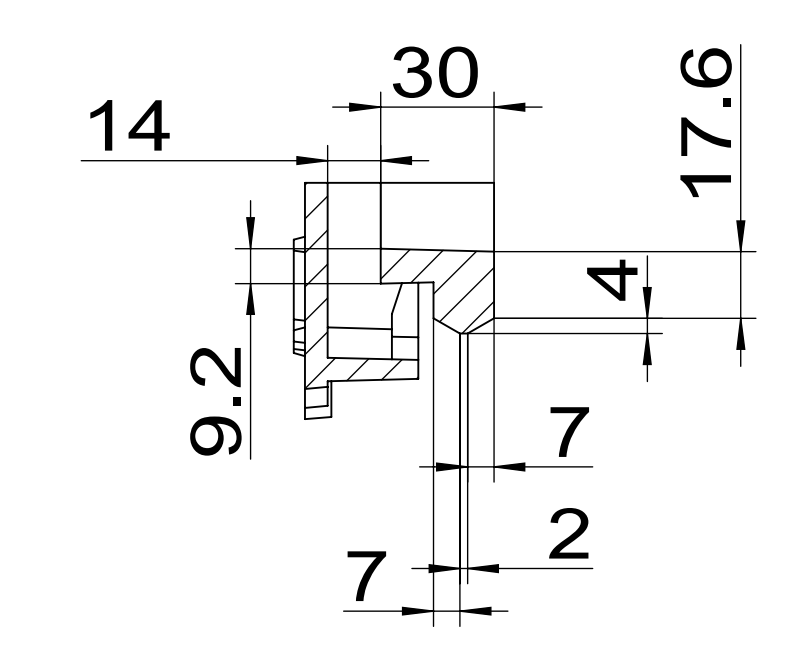




F-F



G-G



MATERIAL	GJS500-7	WEIGHT/kg	29.7kg	CLASS	EN124-2 C250	SCALE	MARK:
						SIZE	CERTIFICATE NO. /
						695x695x45	PRODUCT CODE
						NAME	L-LGSMEN-270L
				ITEM CODE			
				DESIGN DATE	2017/6/28	EDITION	0
						SHEET	3/3

