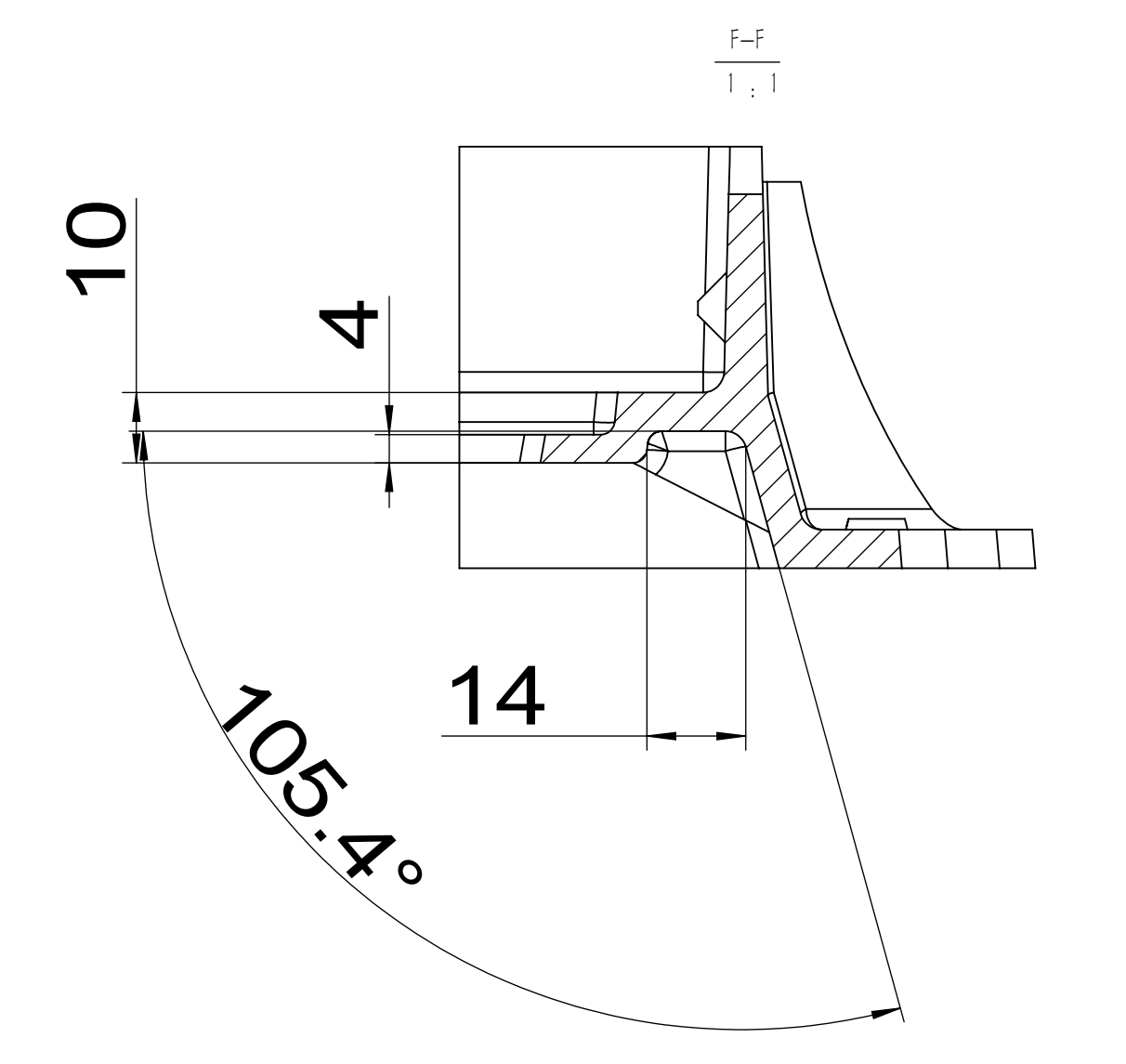
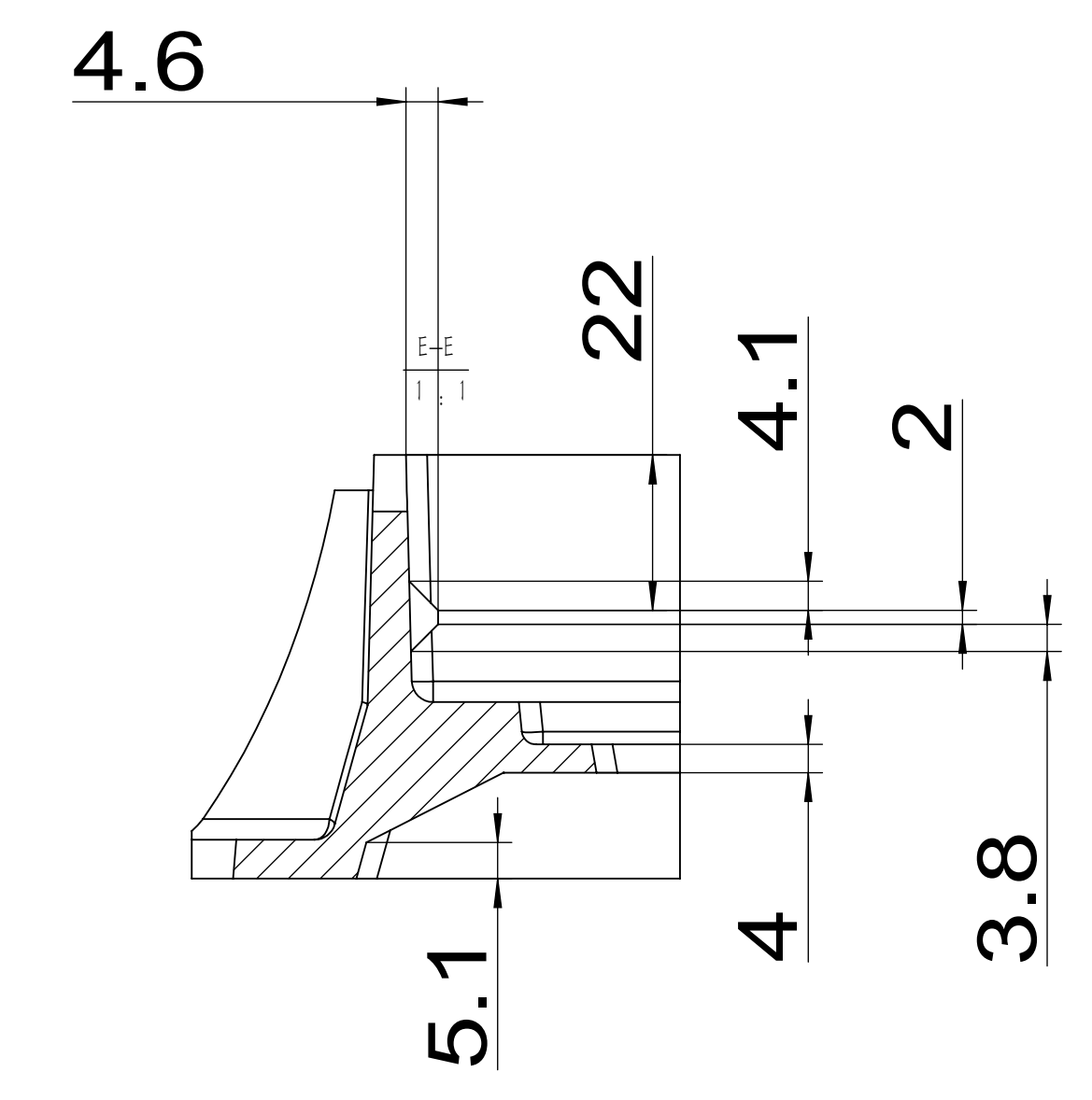
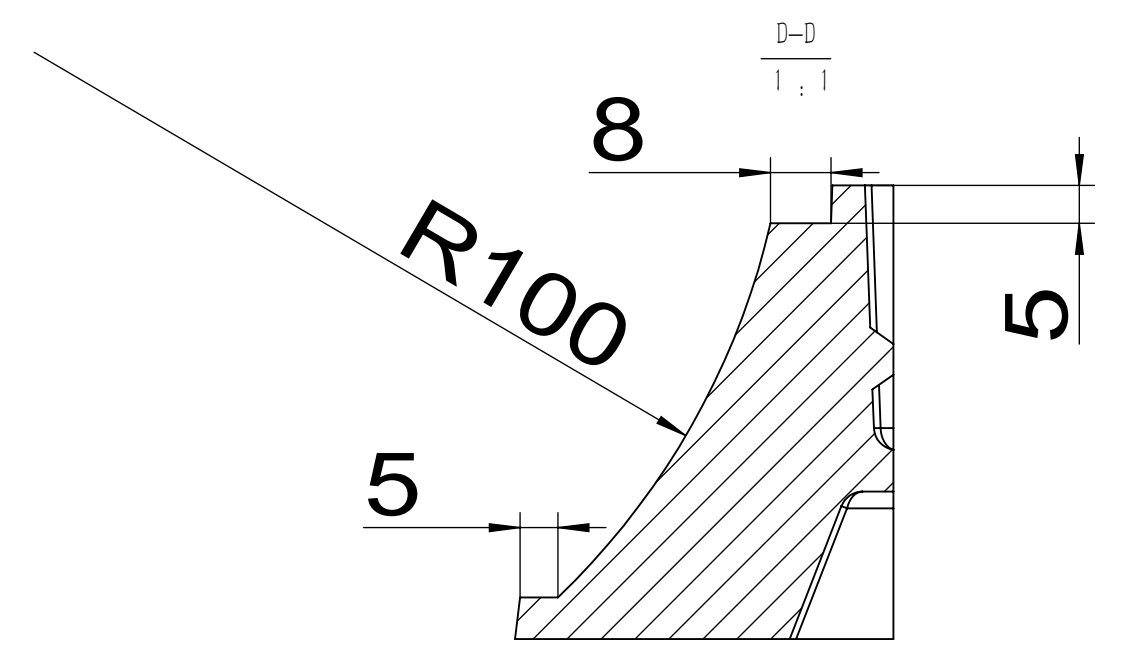
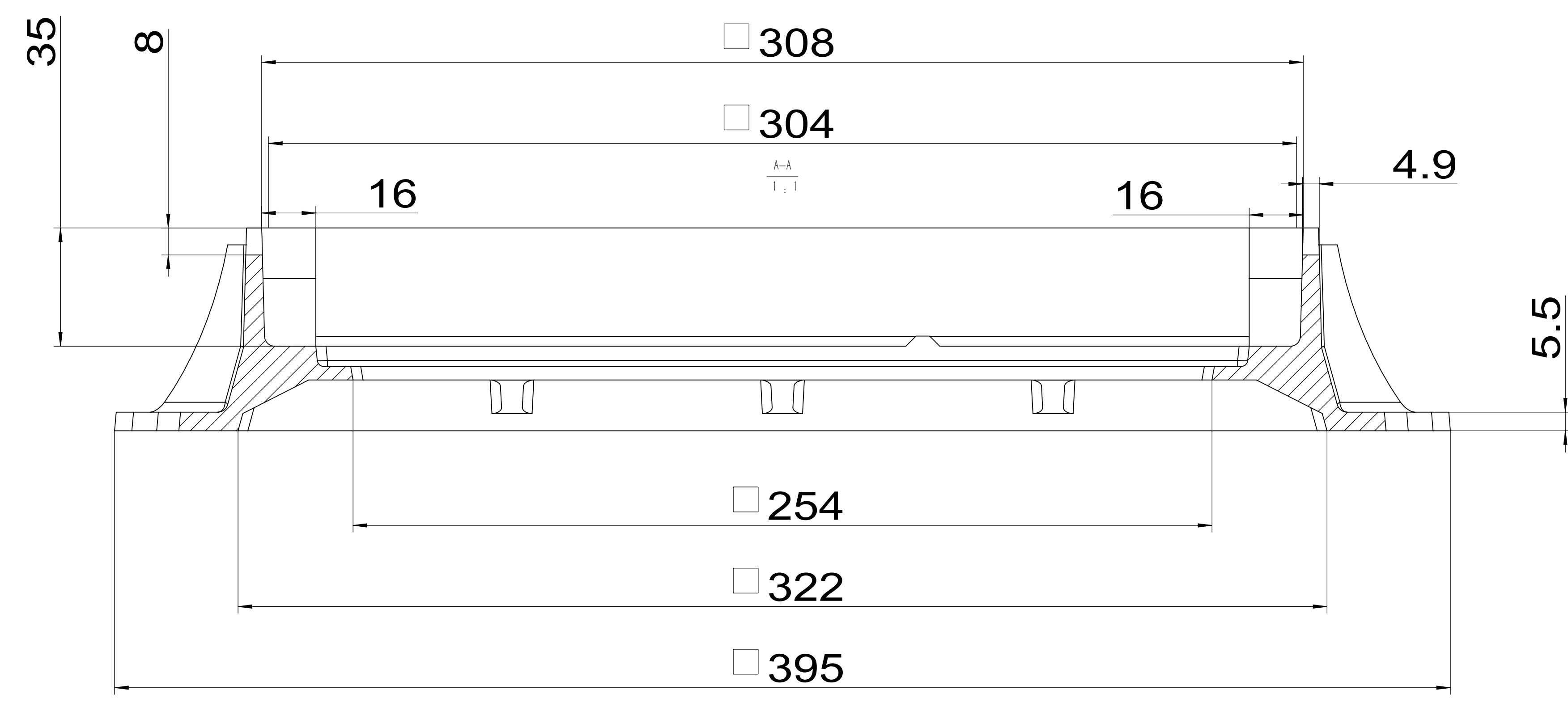
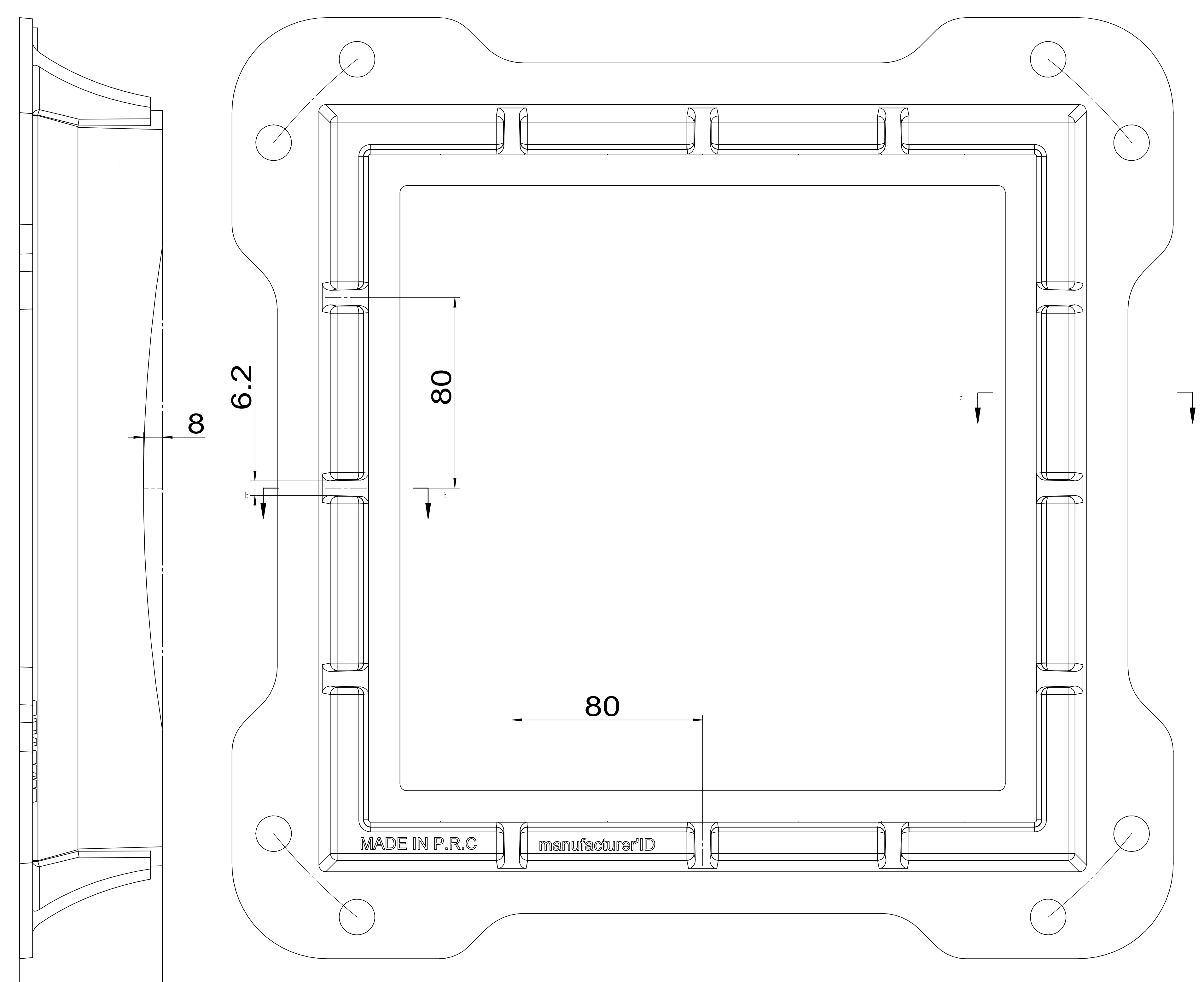
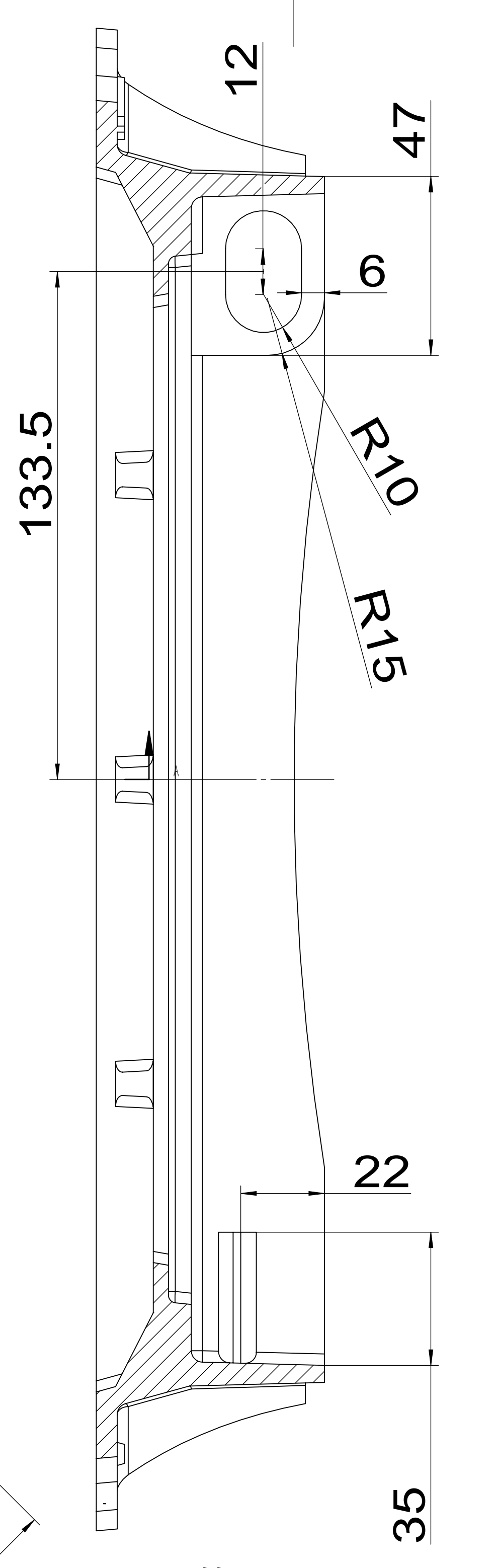
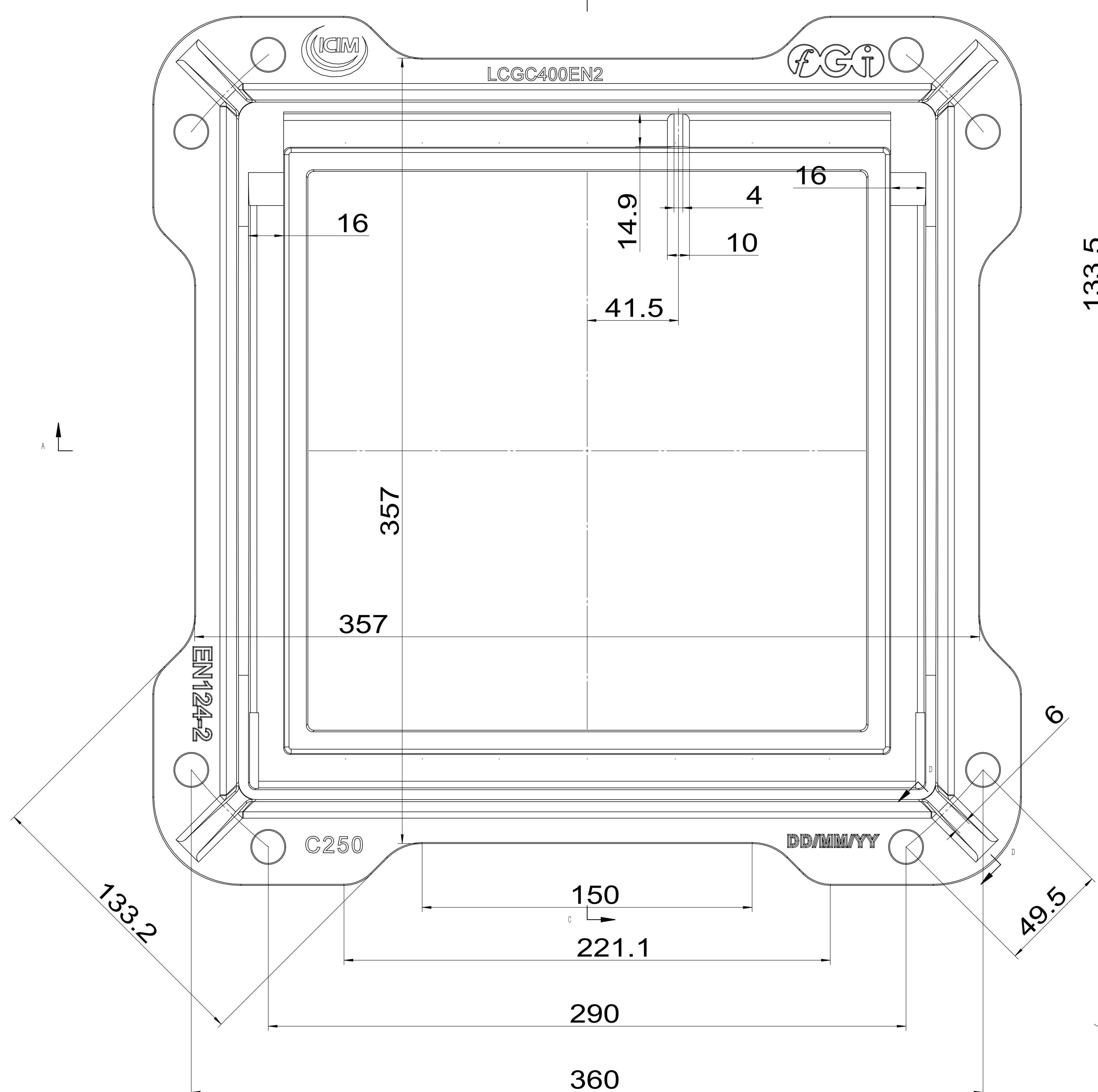



**Technical requirement**

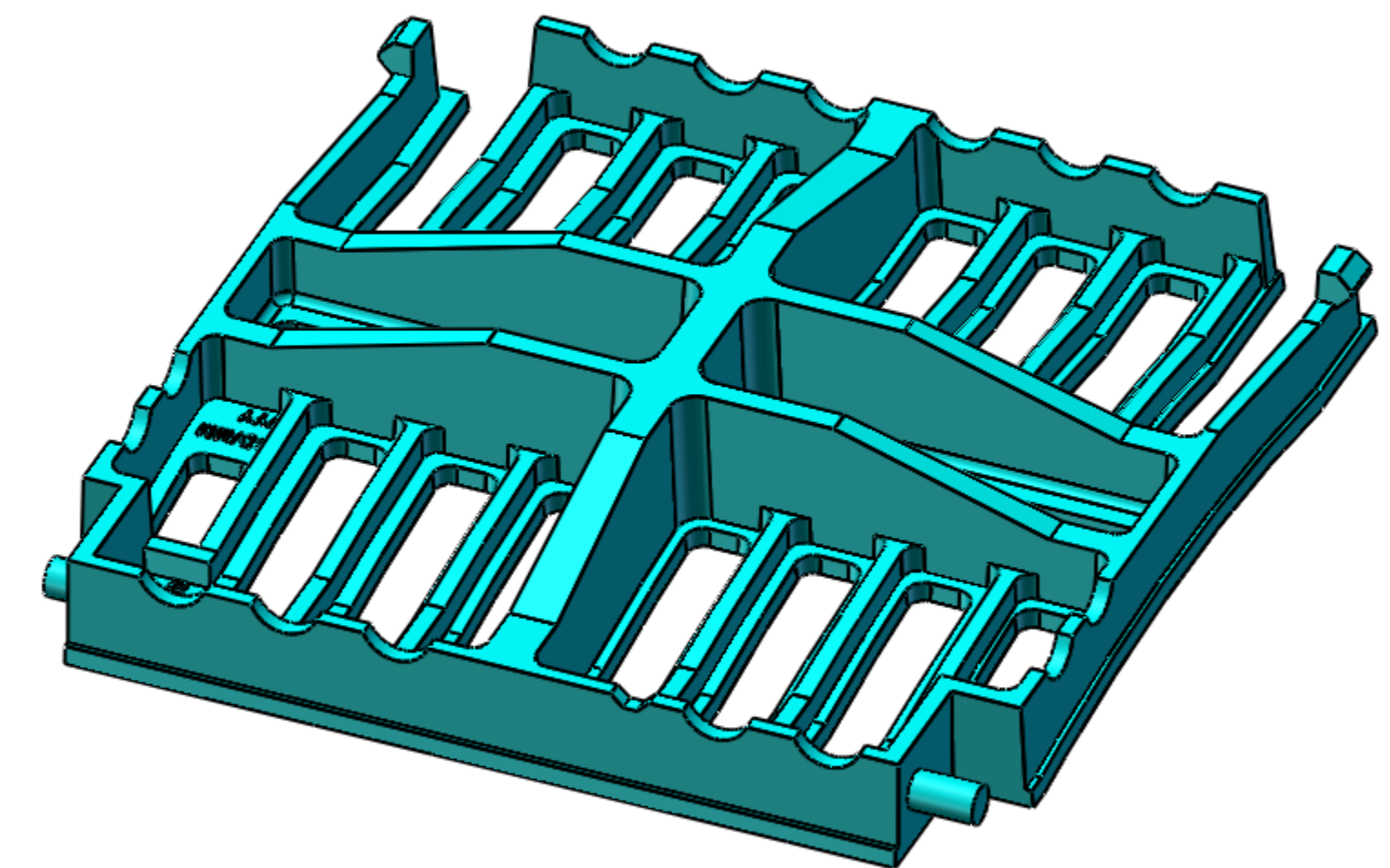
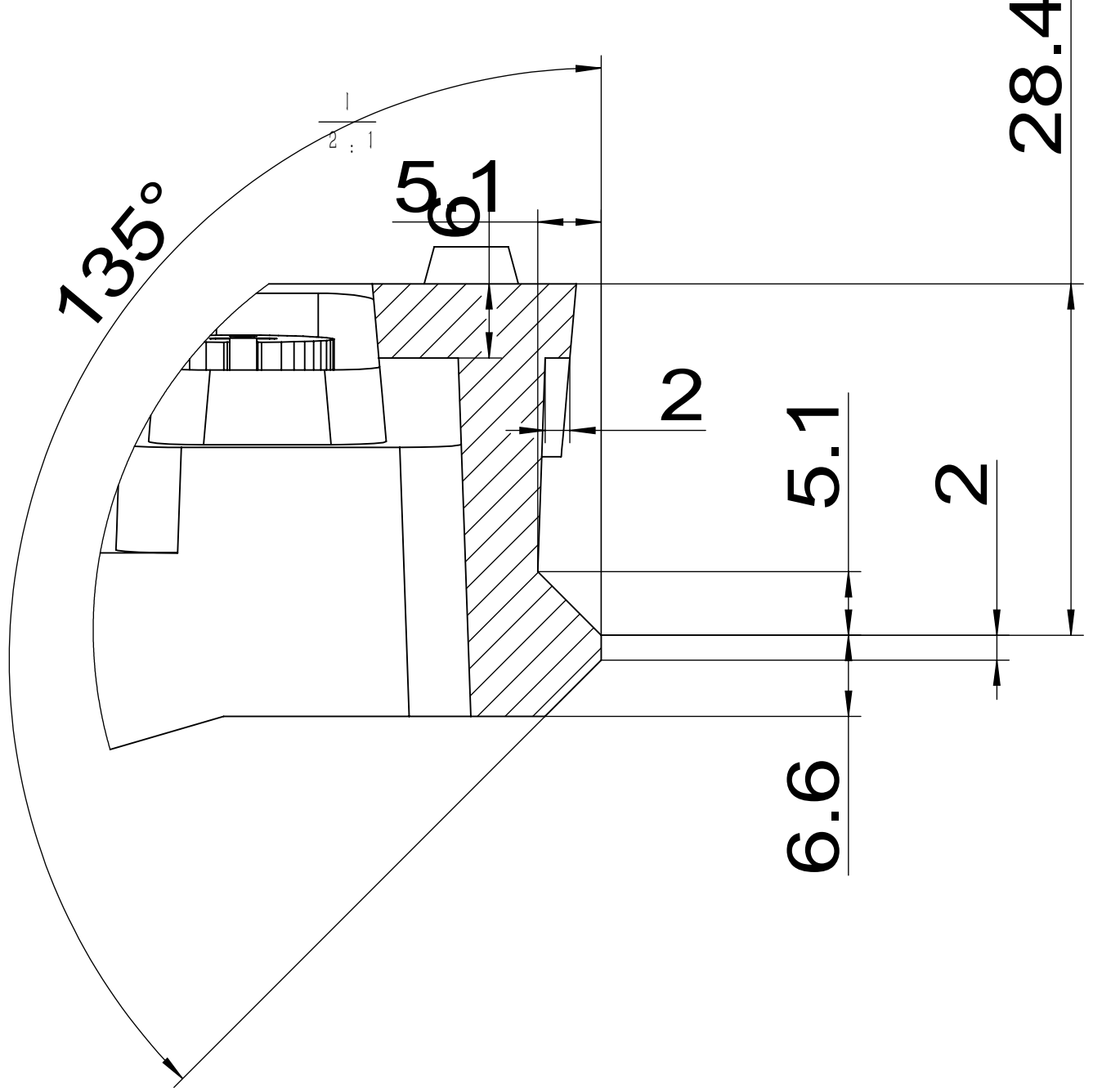
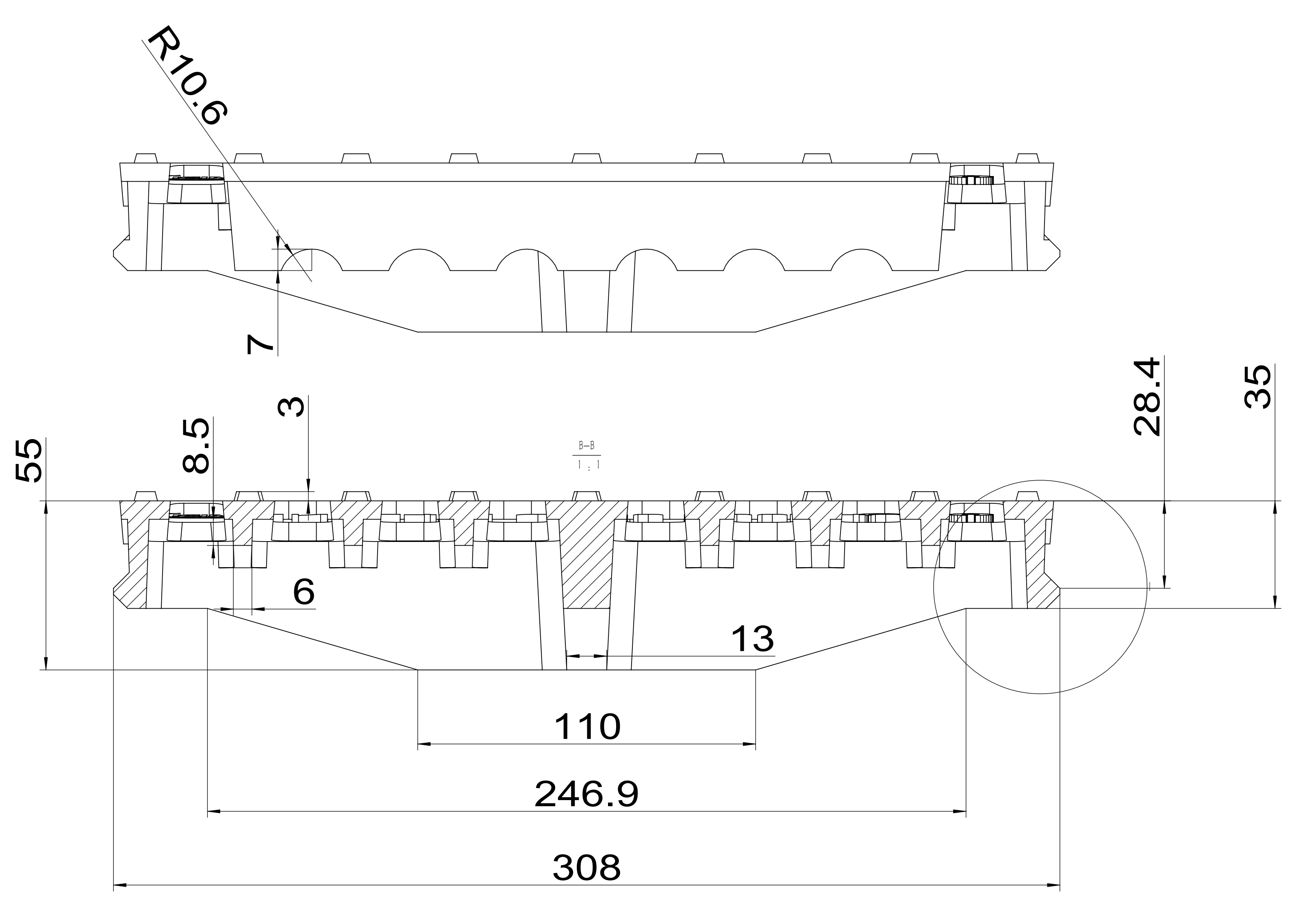
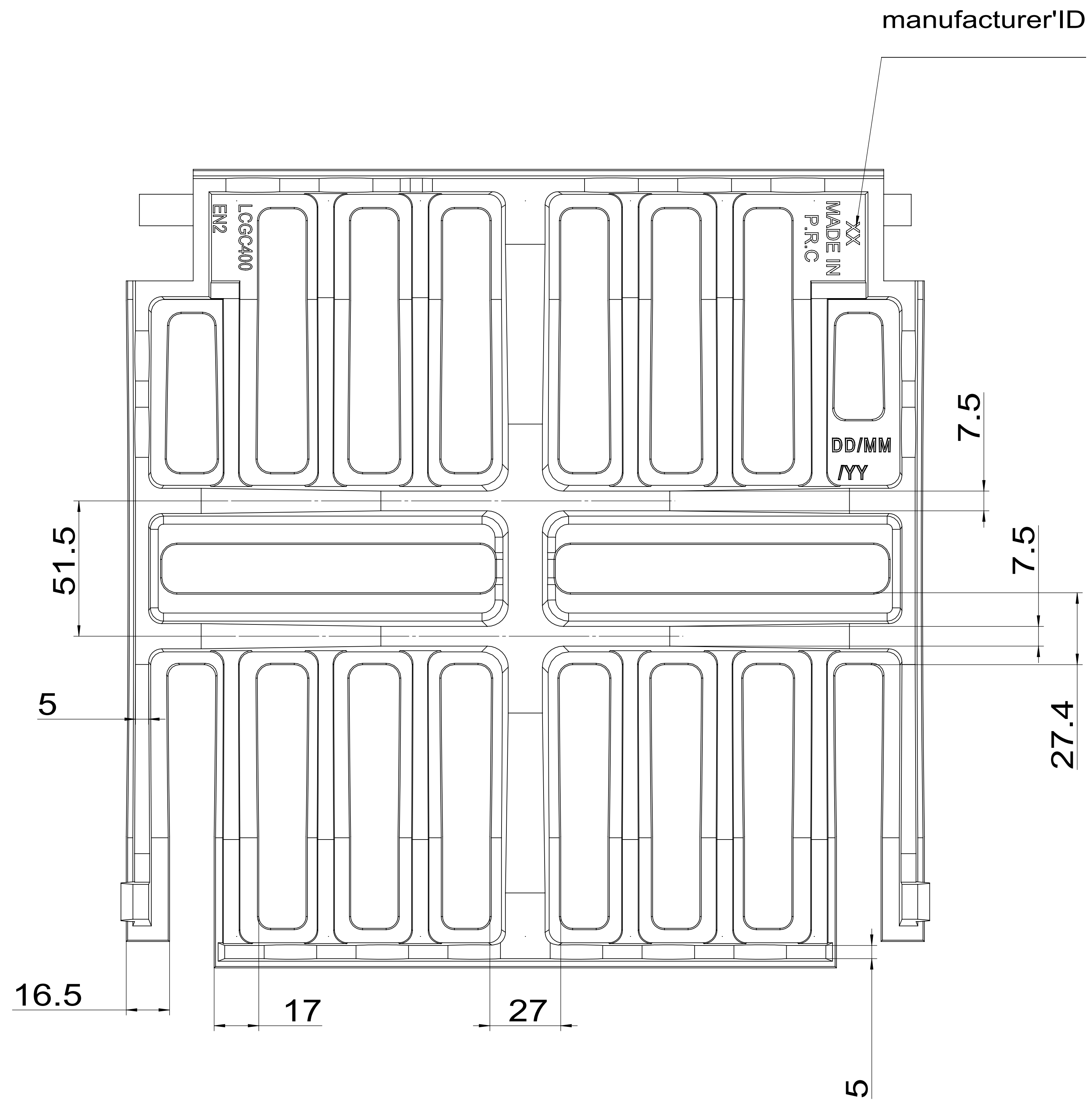
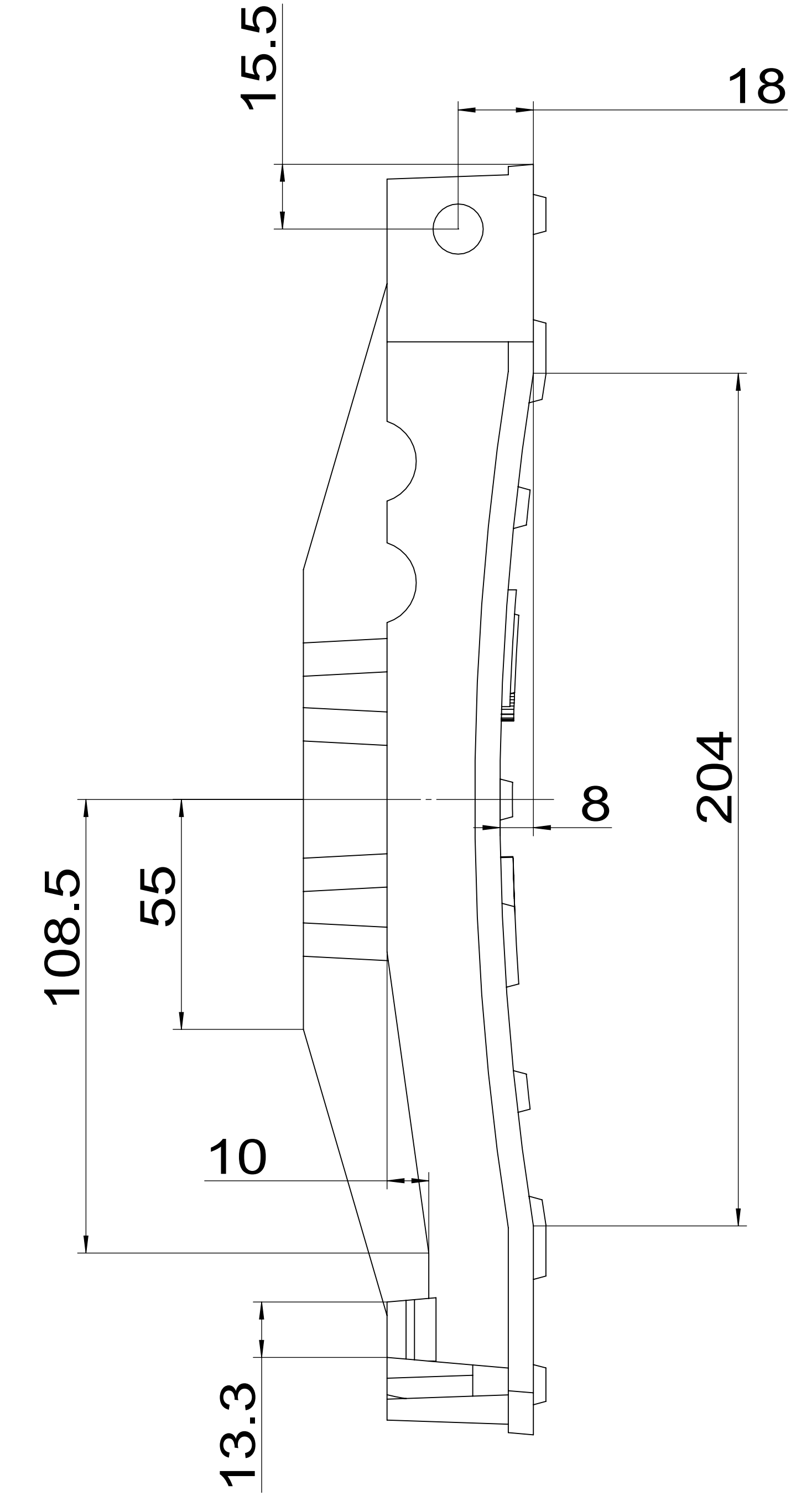
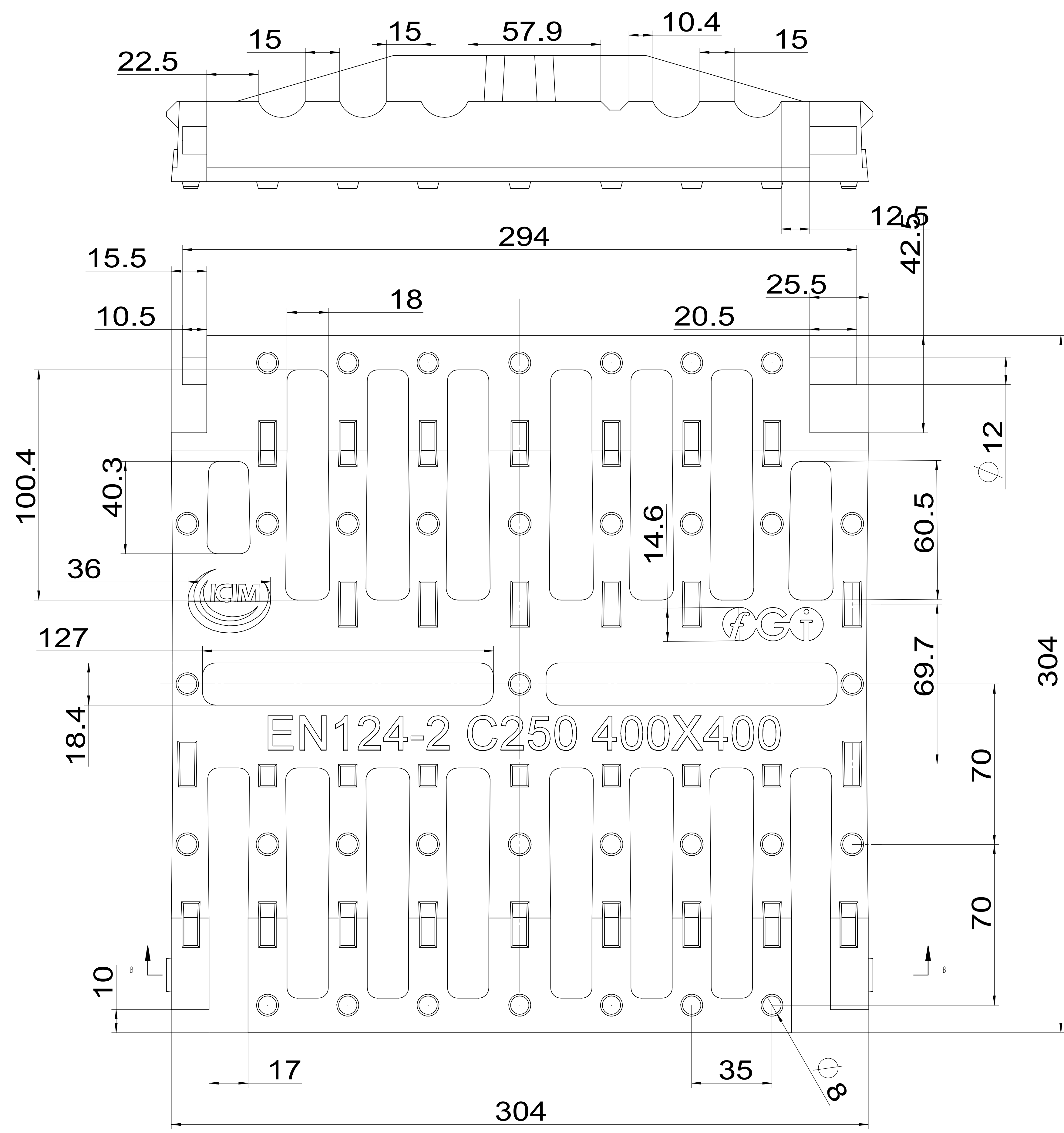
1. pattern draft is 1-2° of main beams ,cover ,grids, frame side.
2. pattern draft is 5-10° of assistive beams ,grid holes ,outside.
3. pattern draft is 15° of surface patterns ,mark, logo.
4. casting radius which aren't been marked is R1-R3.


General Dimension Tolerance	General Weight Tolerance
According To ISO 8062-CT10	Tolerance(%)
	±5%

MATERIAL	GJS500-7	WEIGHT	12.4	CLASS	EN124-2 C250	SCALE	MARK:
						395X395X60	CERTIFICATE NO. / PRODUCT CODE
						NAME	L-GSGEN-240CL
		ITEM CODE					
		DESIGN DATE	2017/7/3	EDITION	0	SHEET	1/3



MATERIAL	GJS500-7	WEIGHT	6kg	CLASS	EN124-2 C250	SCALE	MARK:
						395X395X60	CERTIFICATE NO. / PRODUCT CODE
						NAME	L-GSGEN-240CL
				ITEM CODE			
				DESIGNED DATE	2017/7/3		
						EDITION	0
						SHEET	1/3



MATERIAL	GJS500-7	WEIGHT	6.4kg	CLASS	EN124-2 C250	SCALE	MARK:
						SIZE	CERTIFICATE NO. /
						395X395X60	PRODUCT CODE
						NAME	
						ITEM CODE	GSGEN-240CL
						DESIGNED DATE	
						2017/7/3	
						EDITION	SHEET
						0	1/3